

This presentation is only for meeting purpose

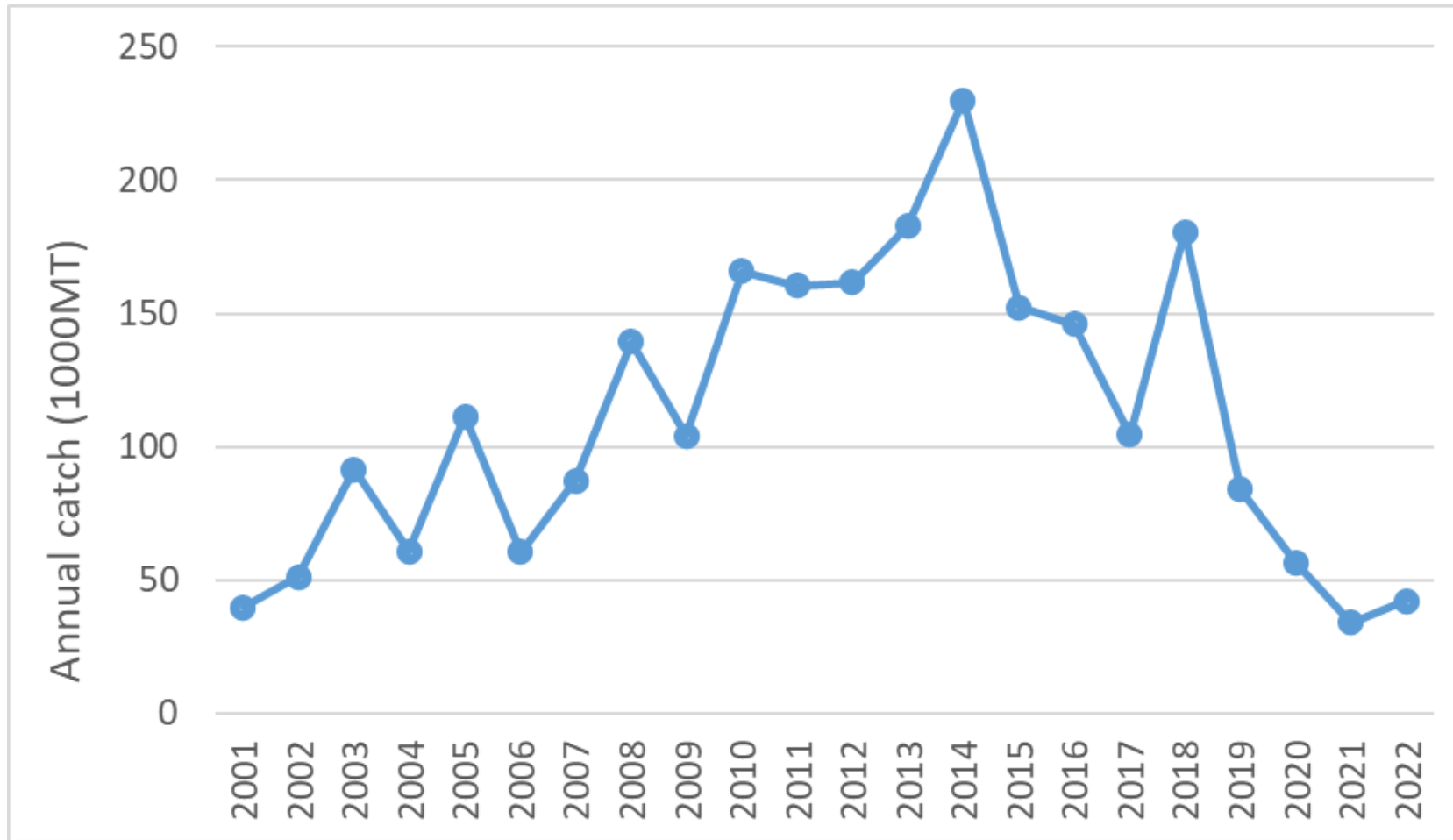
NPFC-2023-SSC PS12-IP01

Fishery status for Pacific saury

Report of Chinese Taipei

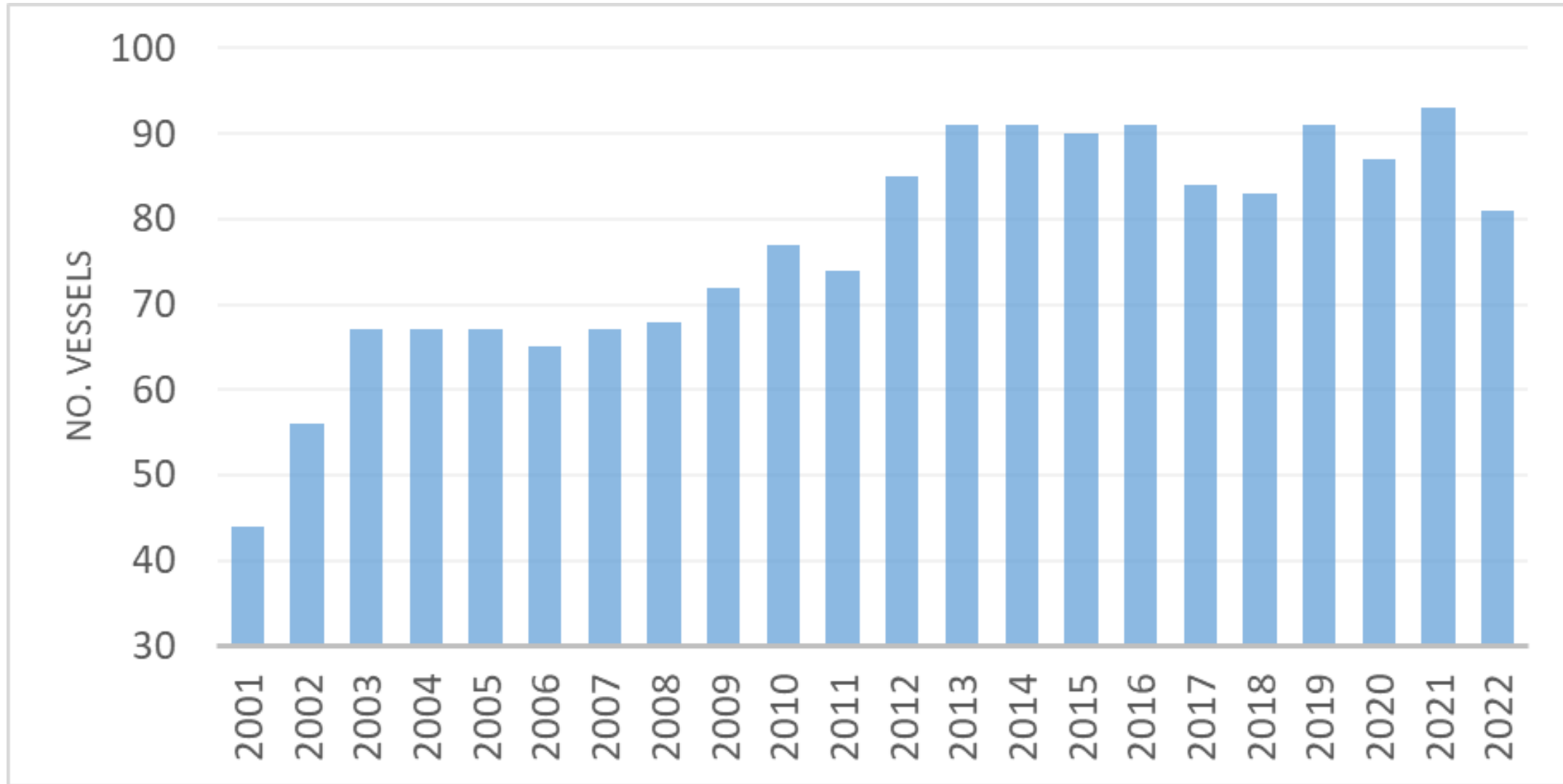


Annual catch series



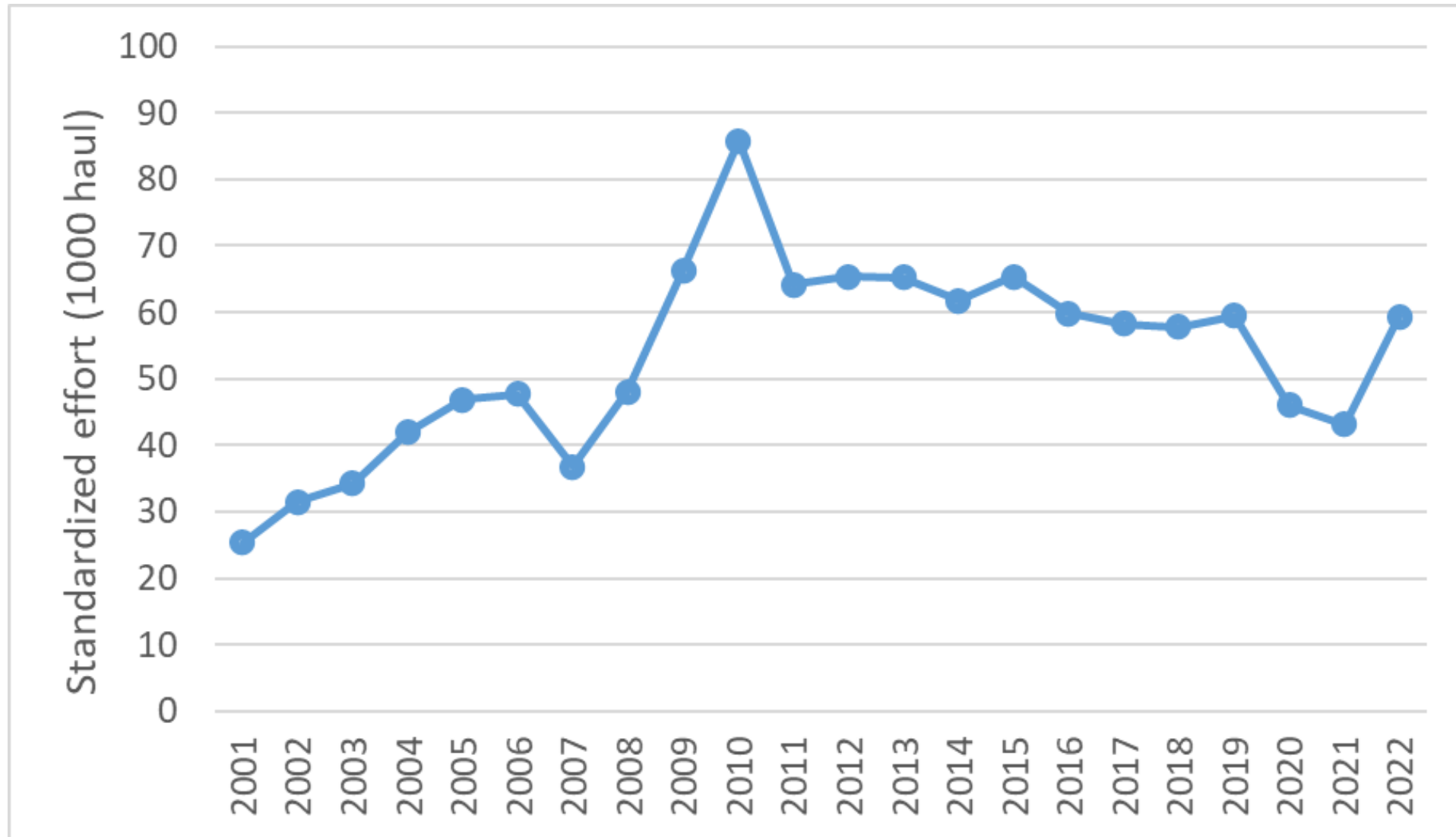
- The historical catch reached the highest in 2014.
- In 2018, the saury catch were around 180,000 tons. Since then, the catch has been decreasing every year until 2021.

Number of vessels



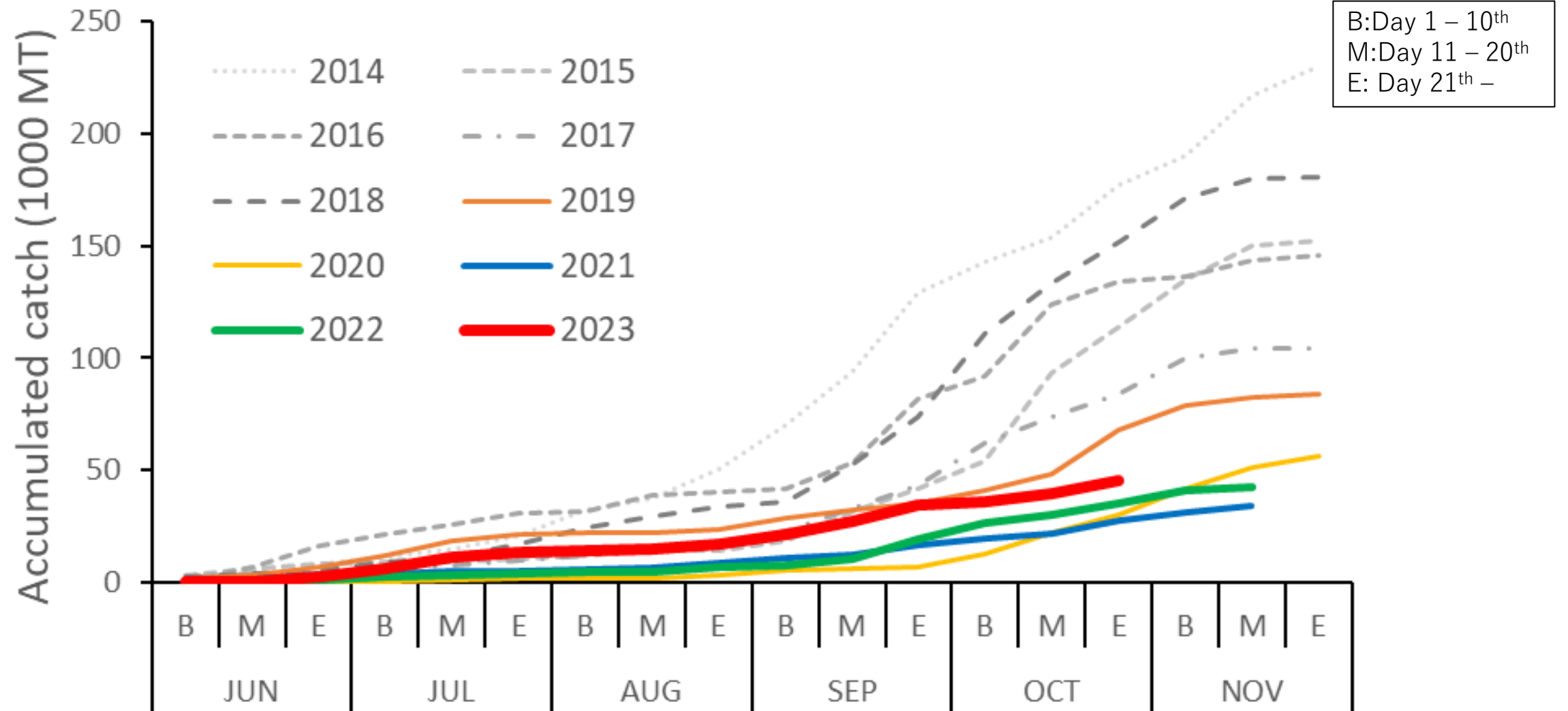
- 93 vessels conducted fishing activities in 2021, and in 2022, the number decreased to 81.

Standardized effort (Catch/stdCPUE)



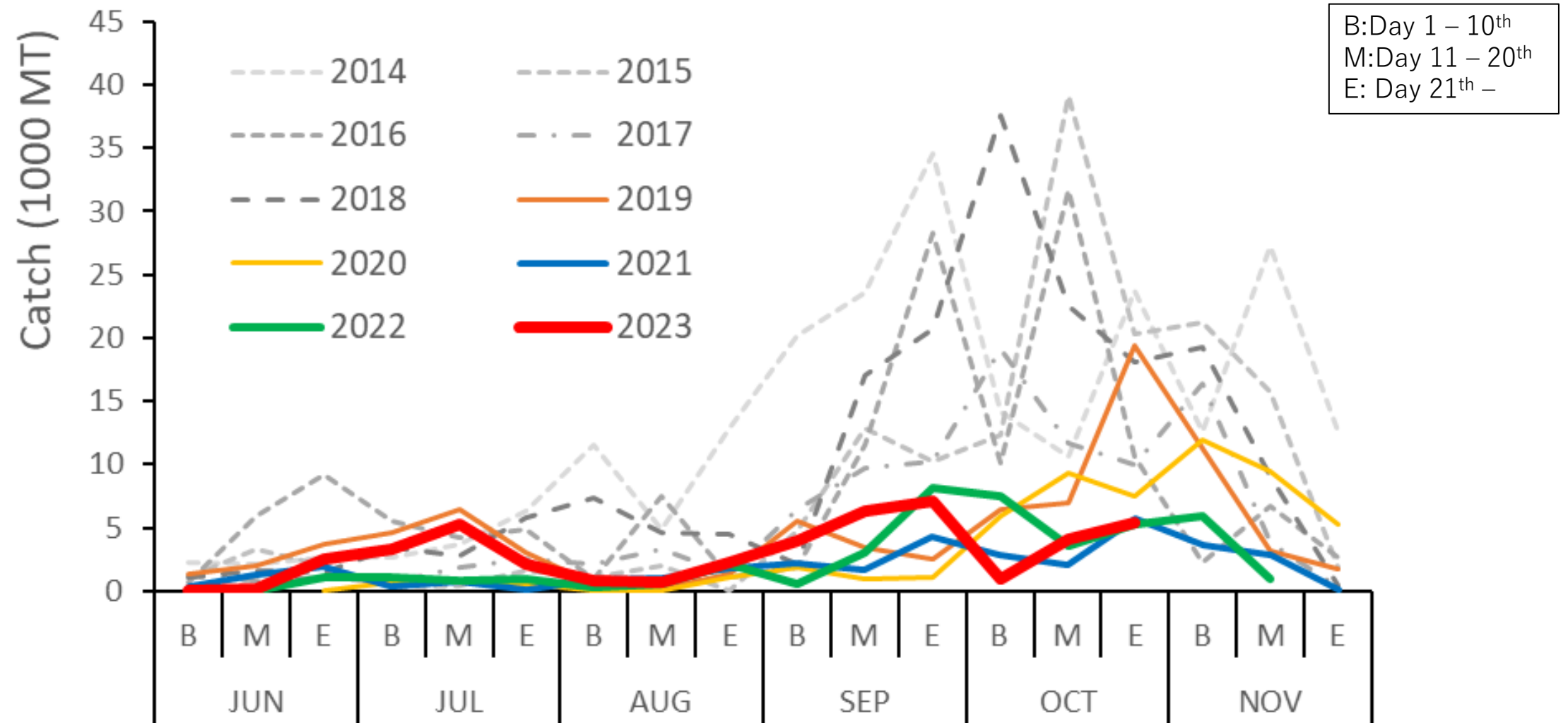
Standardized effort was 59,404 in 2022

Accumulated catch

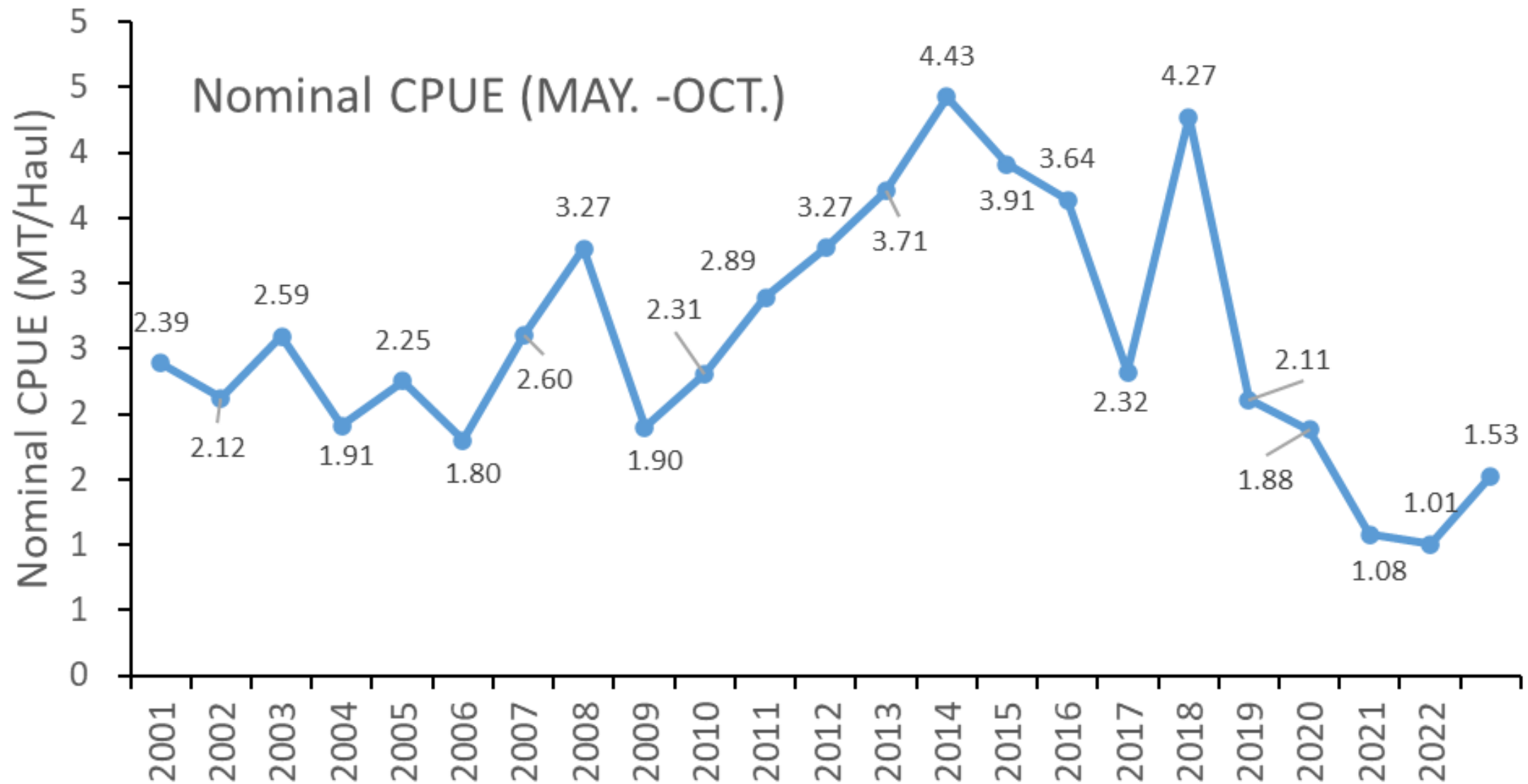


- Accumulated catch by the end of October was 45,171 tons, which was more than that of the same period last year (34,250 tons).

Seasonal catch

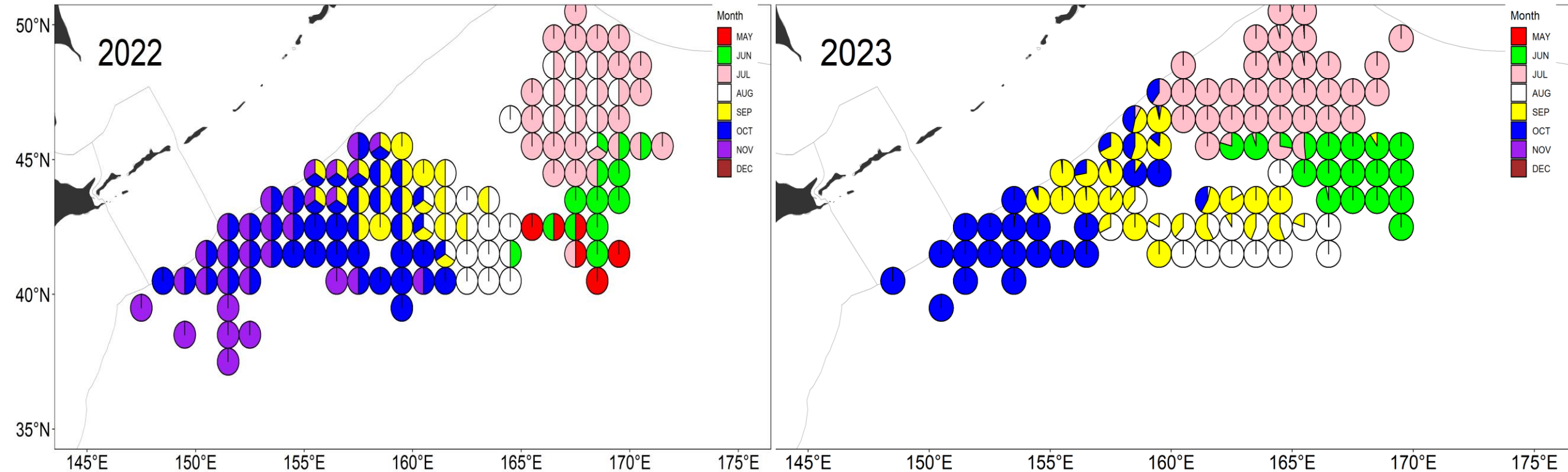


- This was better than last year.



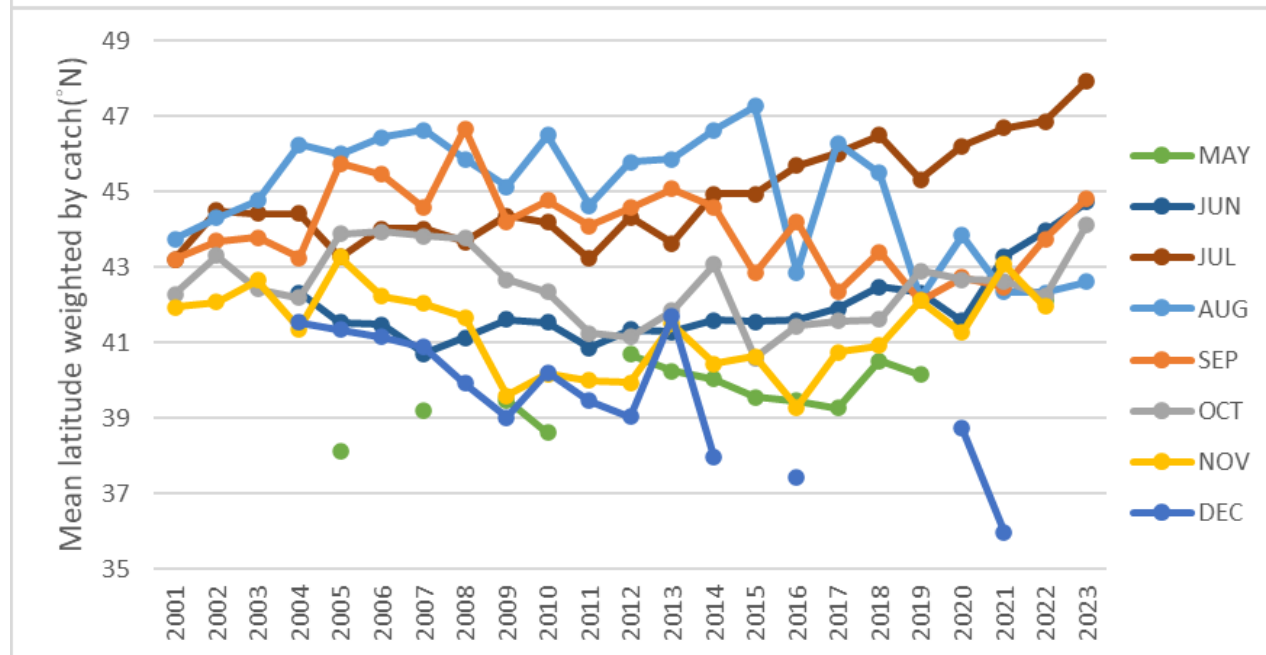
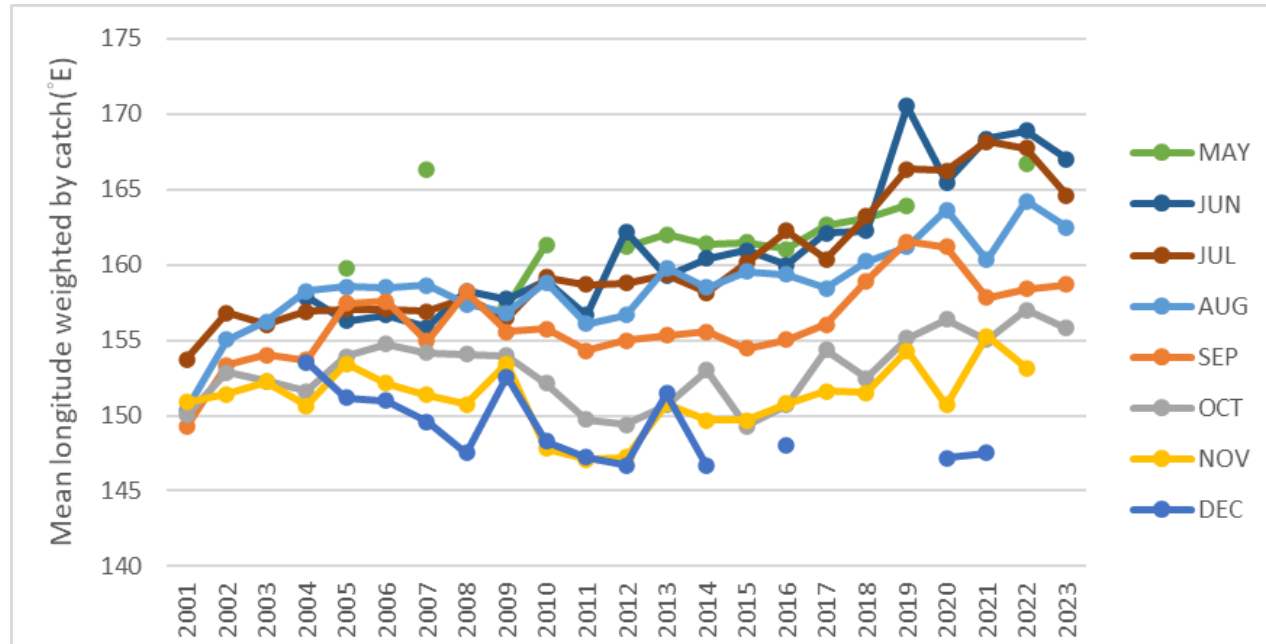
- The nominal CPUE is about 1.53 tons / haul, which is more than that of the same period last year.

Fishing ground



- Comparing with the fishing activities distribution of 2022, it observed that the fishing grounds located more northward and broadly in 2023.

Annual change of fishing ground



Size box compositions

Specification definition :

S : less than 6 pcs/kg

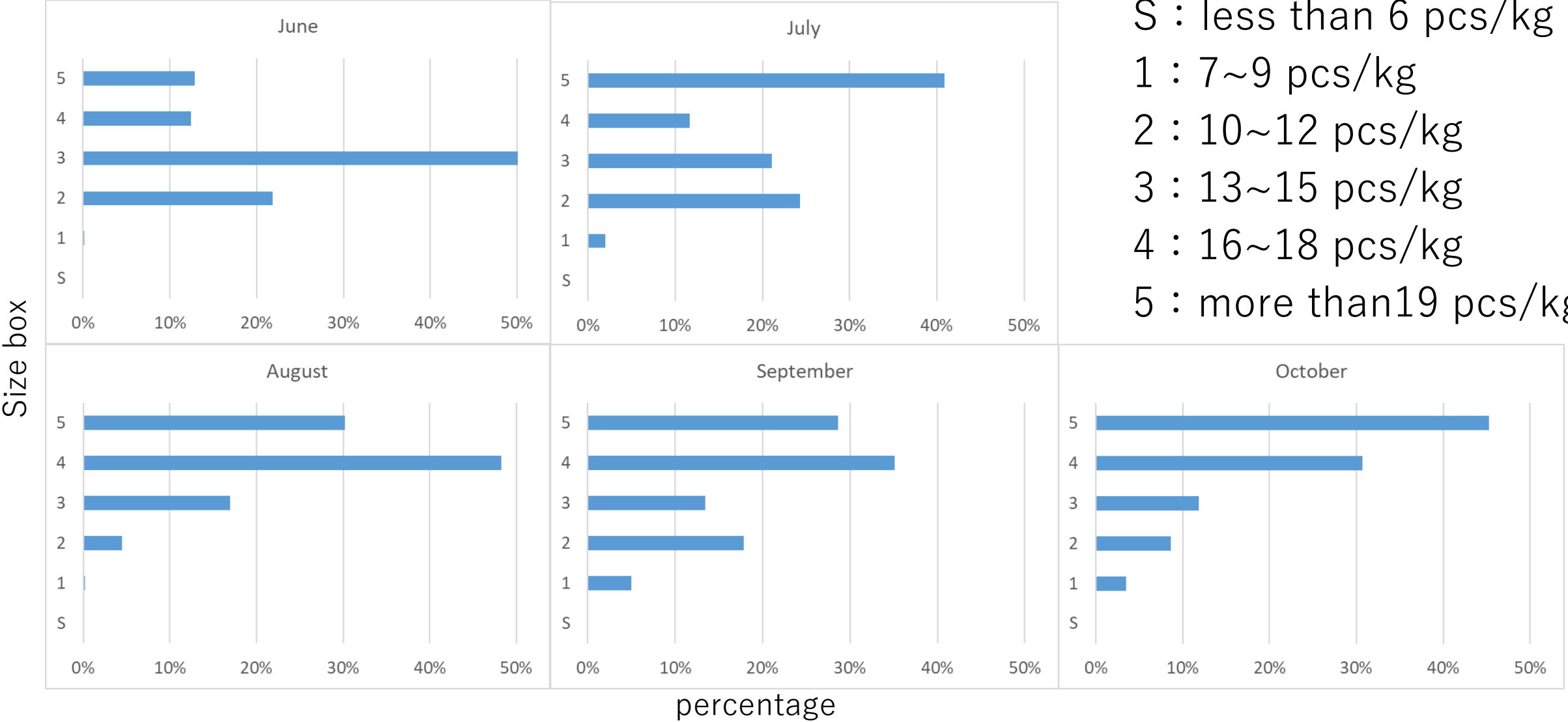
1 : 7~9 pcs/kg

2 : 10~12 pcs/kg

3 : 13~15 pcs/kg

4 : 16~18 pcs/kg

5 : more than 19 pcs/kg



percentage

Summary

- Accumulated catch by the end of October was 45,171 tons, which was more than that of the same period last year (34,250 tons).
- The nominal CPUE is about 1.53 tons /haul in 2023 (1.01 tons /haul in 2022, 1.08 tons /haul in 2021).

Thank you for your attention