

This presentation is only for meeting purpose



North Pacific Fisheries Commission

NPFC-2022-SSC PS09-IP08

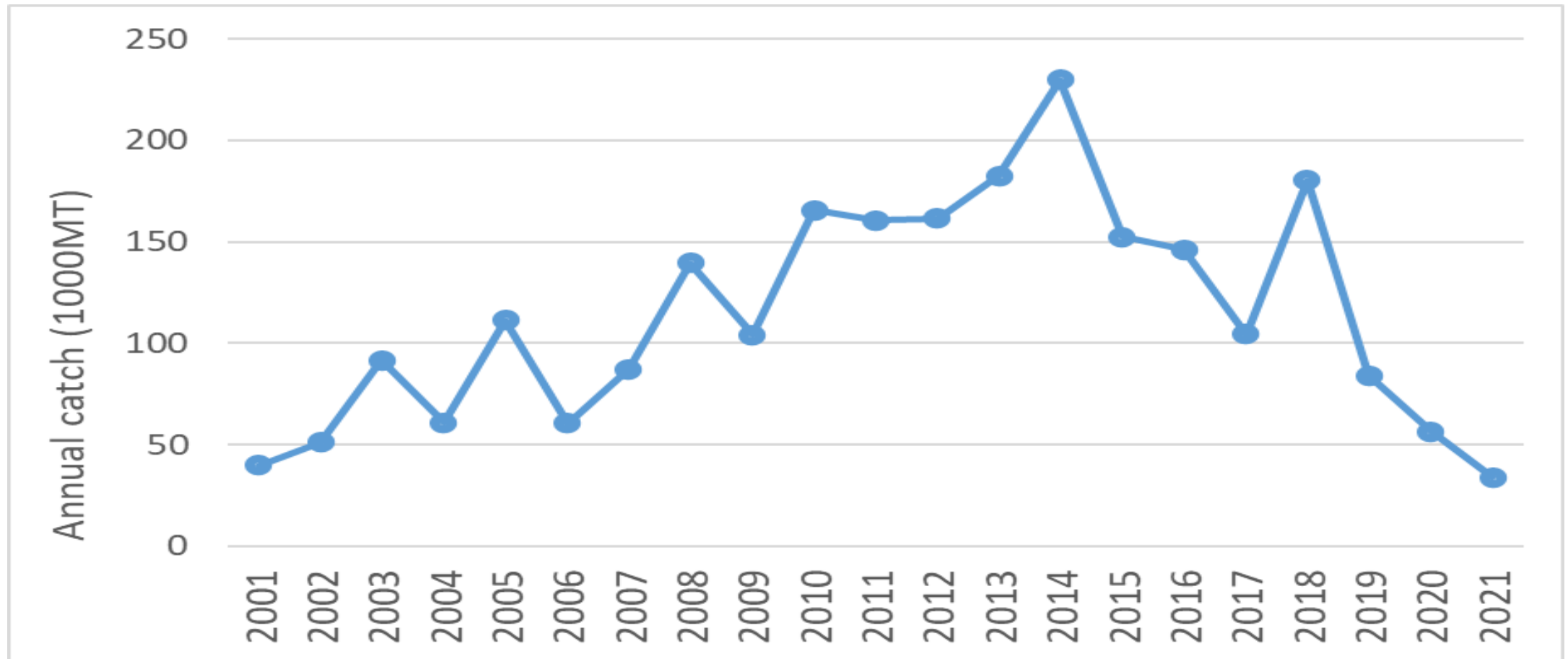
Fishery status for Pacific saury

Report of Chinese Taipei

2nd Floor Hakuyo Hall,
Tokyo University of Marine Science and Technology,
4-5-7 Konan, Minato-ku, Tokyo
108-8477, JAPAN

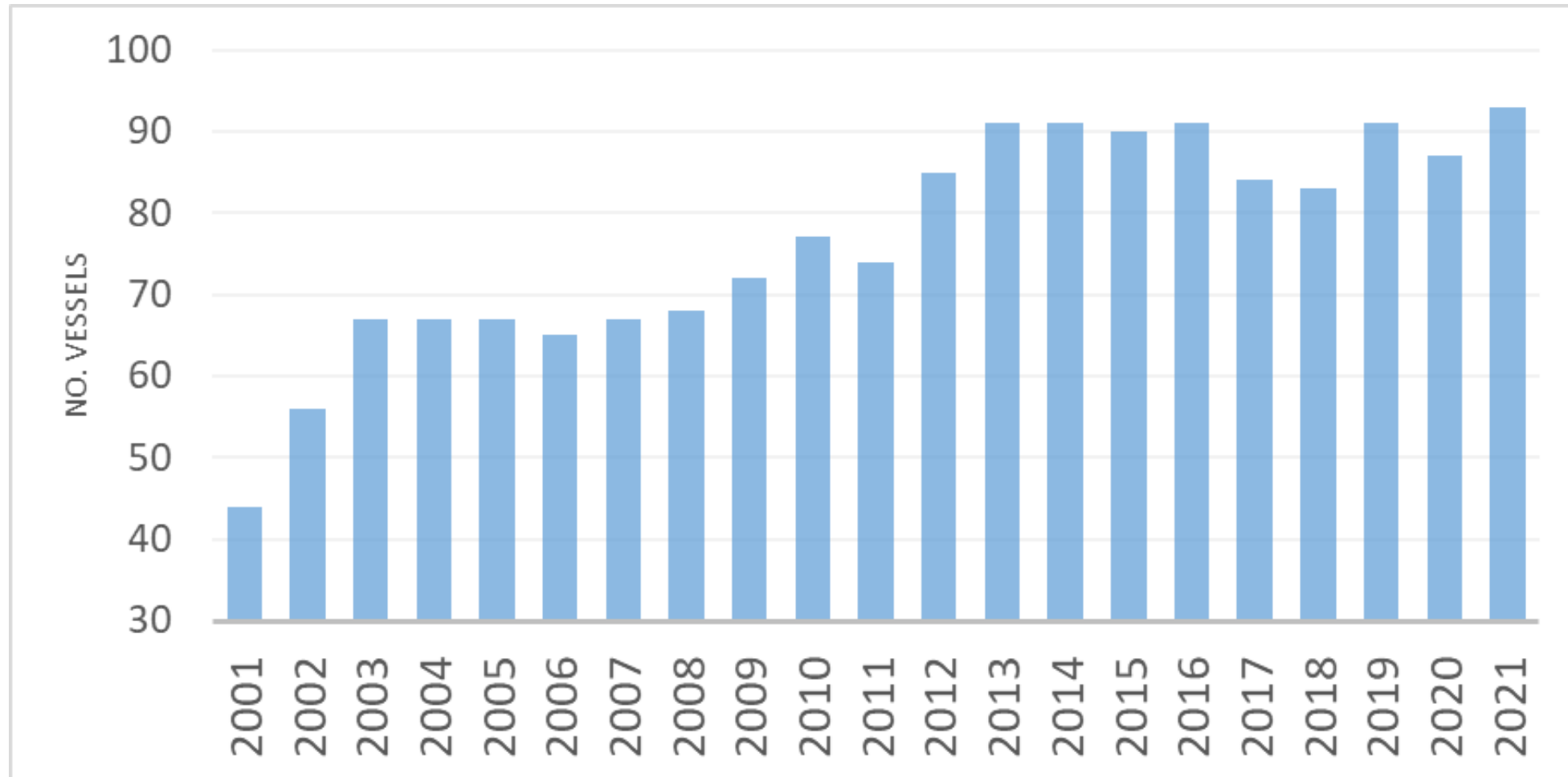
TEL +81-3-5479-8717
FAX +81-3-5479-8718
Email secretariat@npfc.int
Web www.npfc.int

Annual catch series



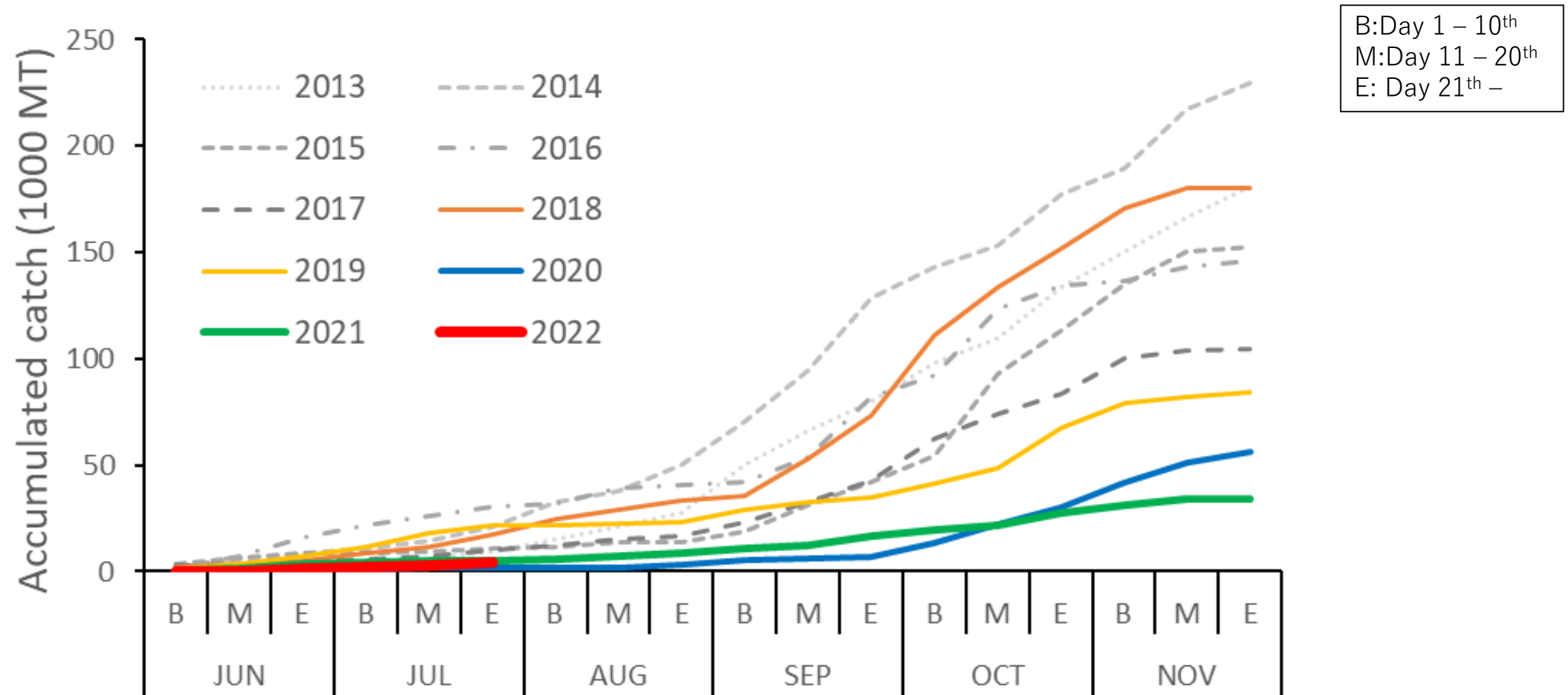
- The historical catch reached the highest in 2014.
- In 2018, the saury catch were around 180,000 tons. Since then, the catch has been decreasing every year.

Number of vessels



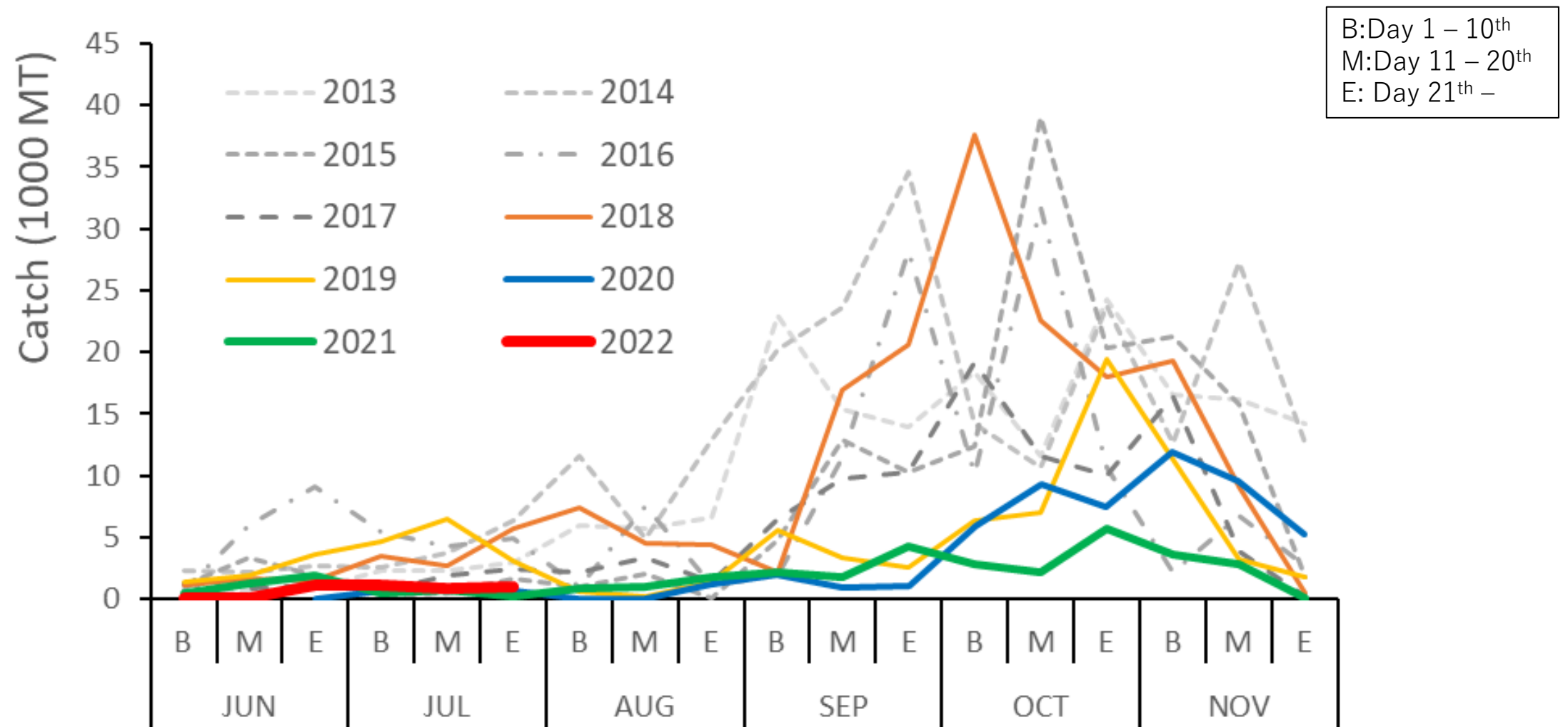
- 87 vessels conducted fishing activities in 2020, and in 2021, the number increased to 93.

Accumulated catch

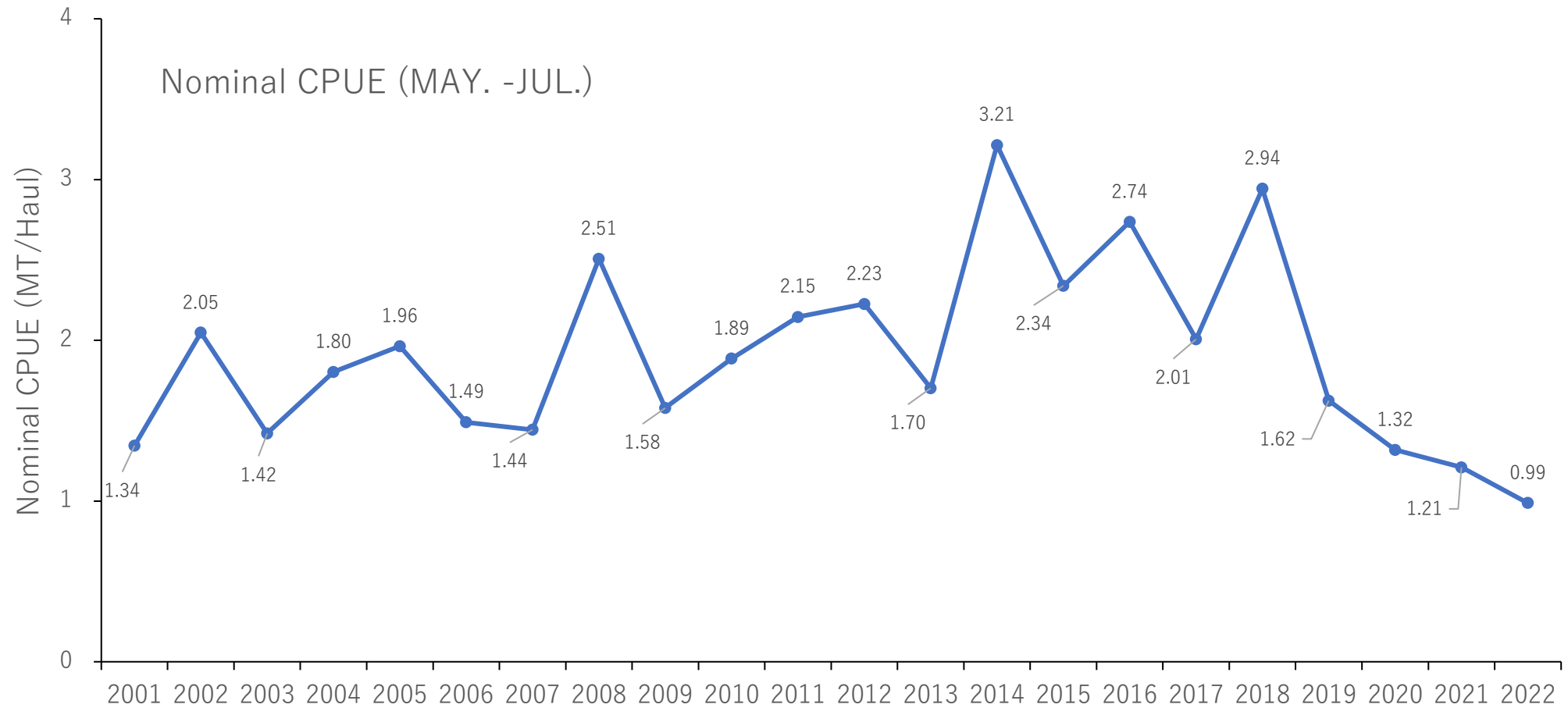


- Accumulated catch by the end of July was 4,069 tons, which was less than that of the same period last year (4,895 tons).

Seasonal catch

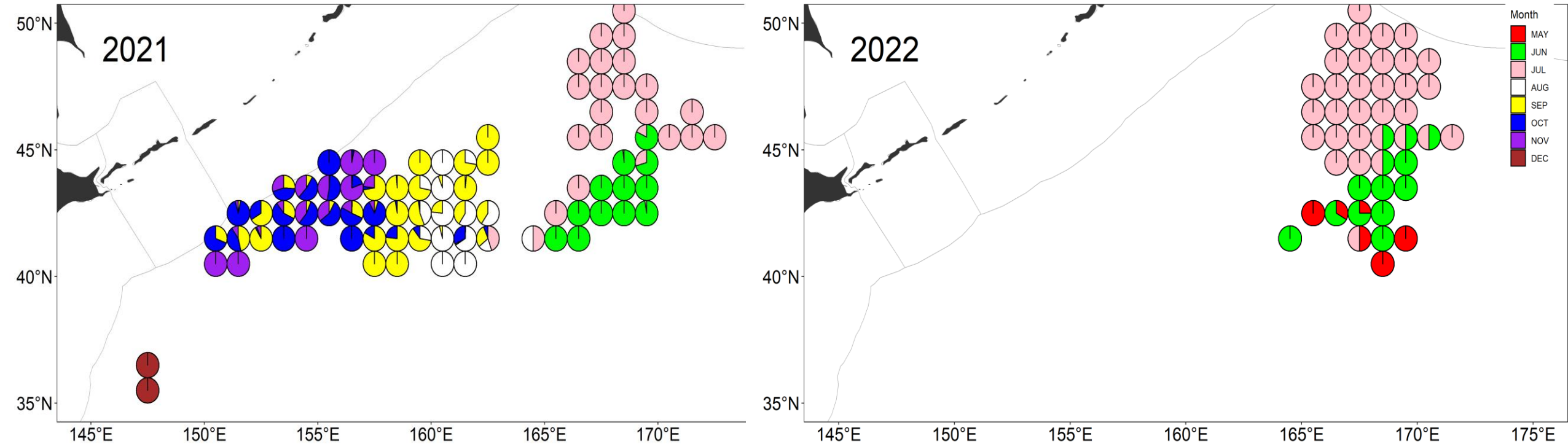


- This was the lowest since 2001.



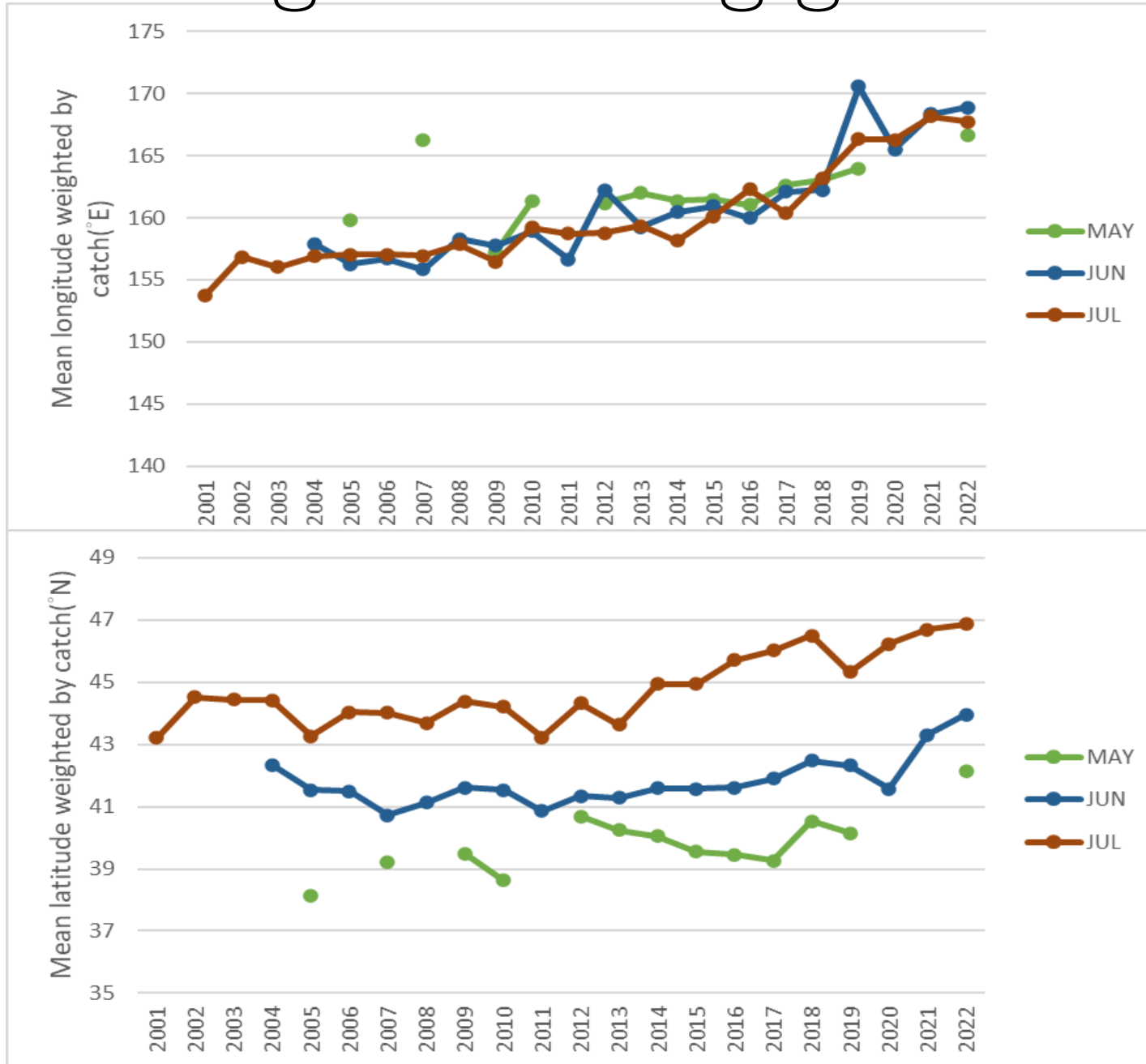
- The nominal CPUE is about 1 tons / haul, which is less than that of the same period last year

Fishing ground



- Comparing with the fishing activities distribution of 2021, it observed that the fishing grounds located more northward in 2022.

Annual change of fishing ground



Summary

- Accumulated catch by the end of July was 4,069 tons, which was less than that of the same period last year (4,895 tons).
- The nominal CPUE is about 1 tons /haul in 2022 (1.21 tons /haul in 2021, 1.32 tons /haul in 2020).

Thank you for your attention