

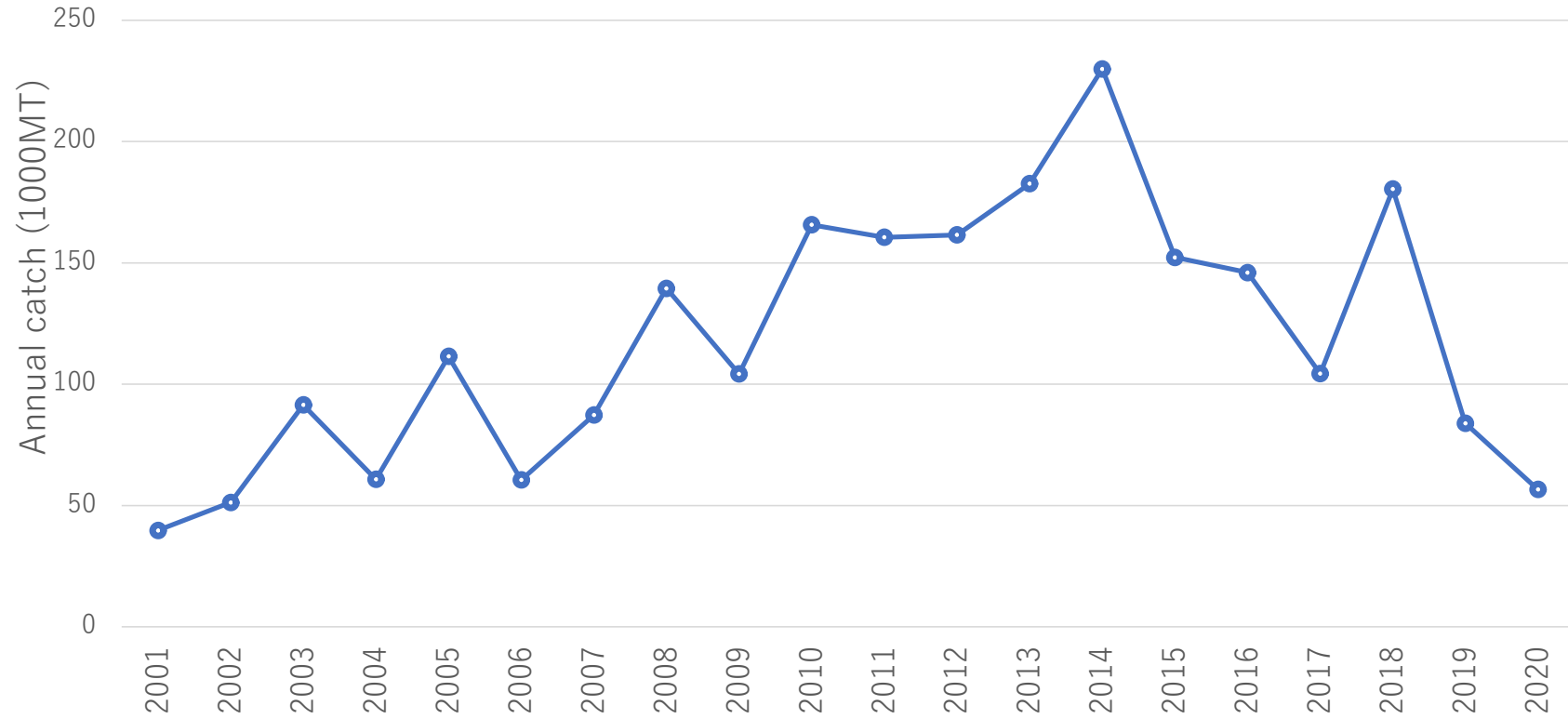
This presentation is only for meeting purpose

# Fishery status for Pacific saury

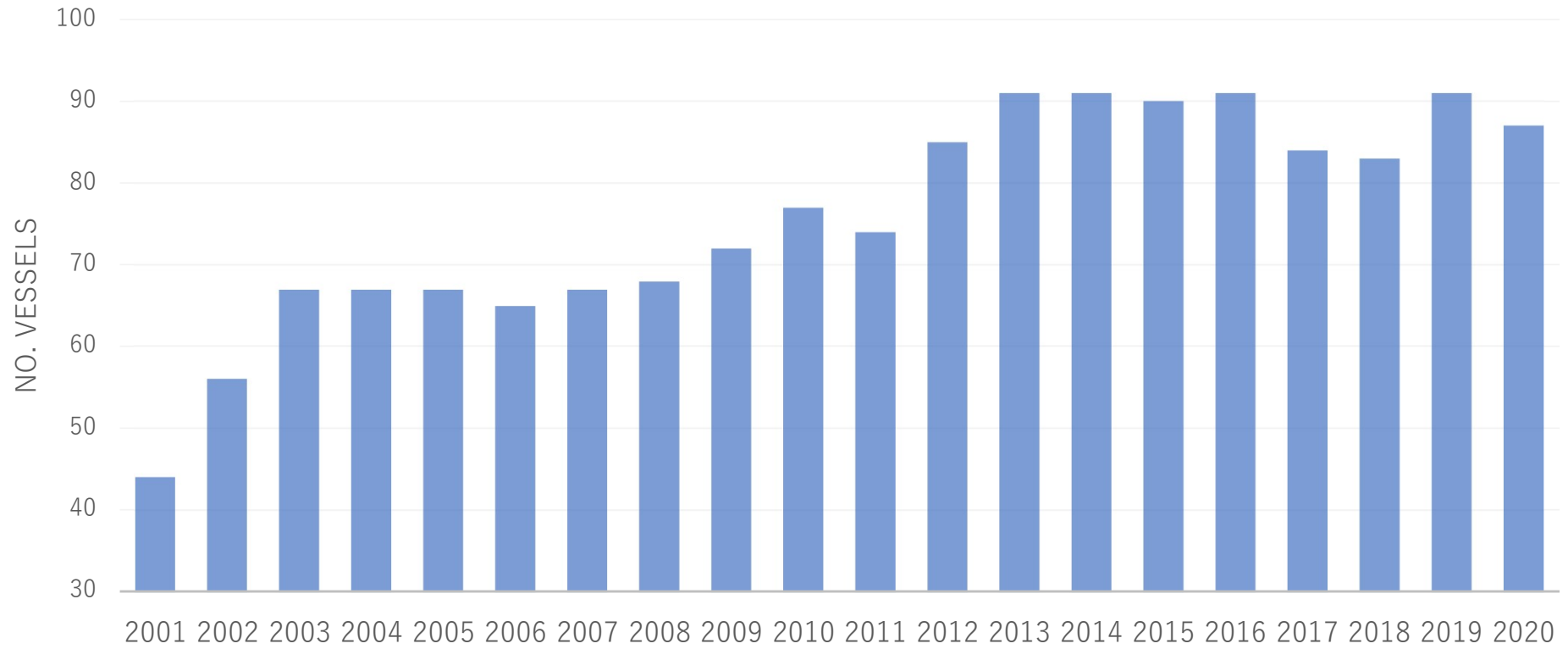
Report of Chinese Taipei



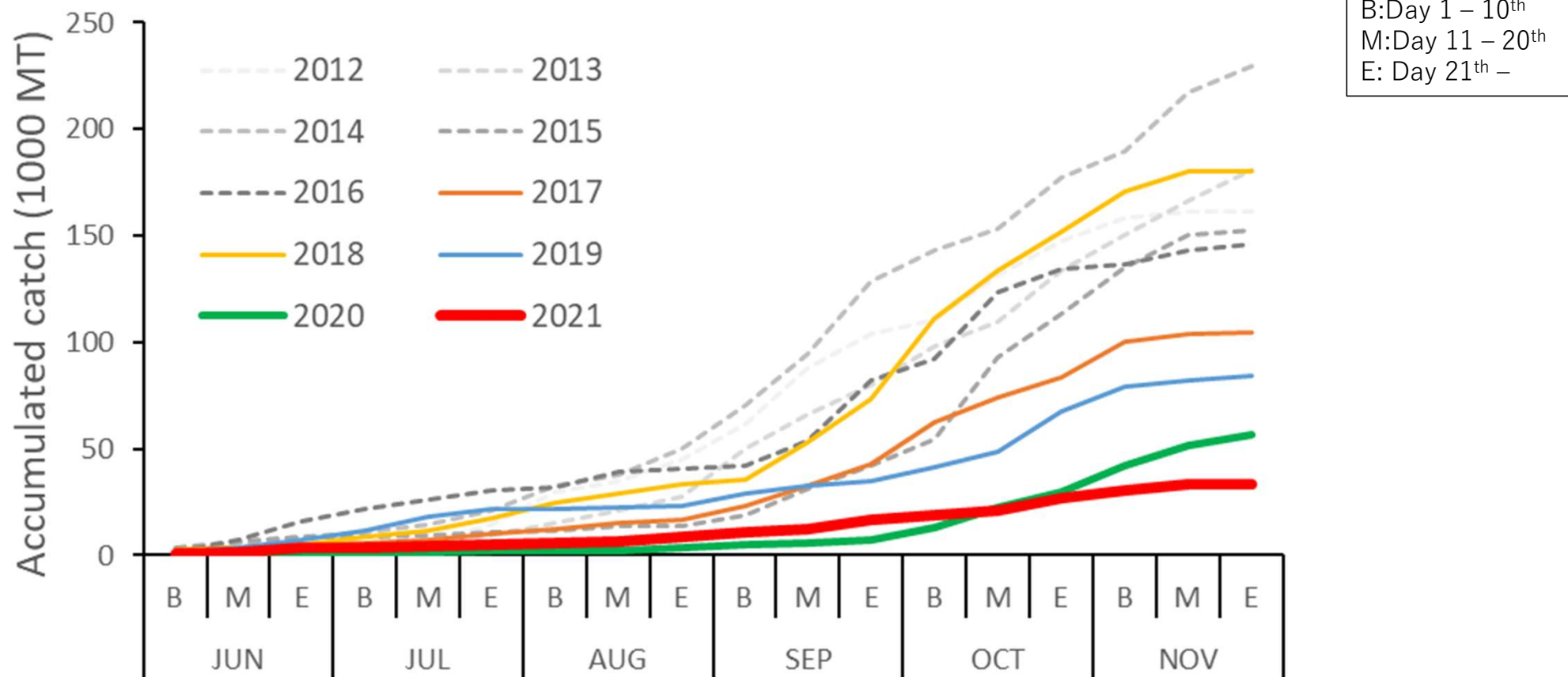
# Annual catch series



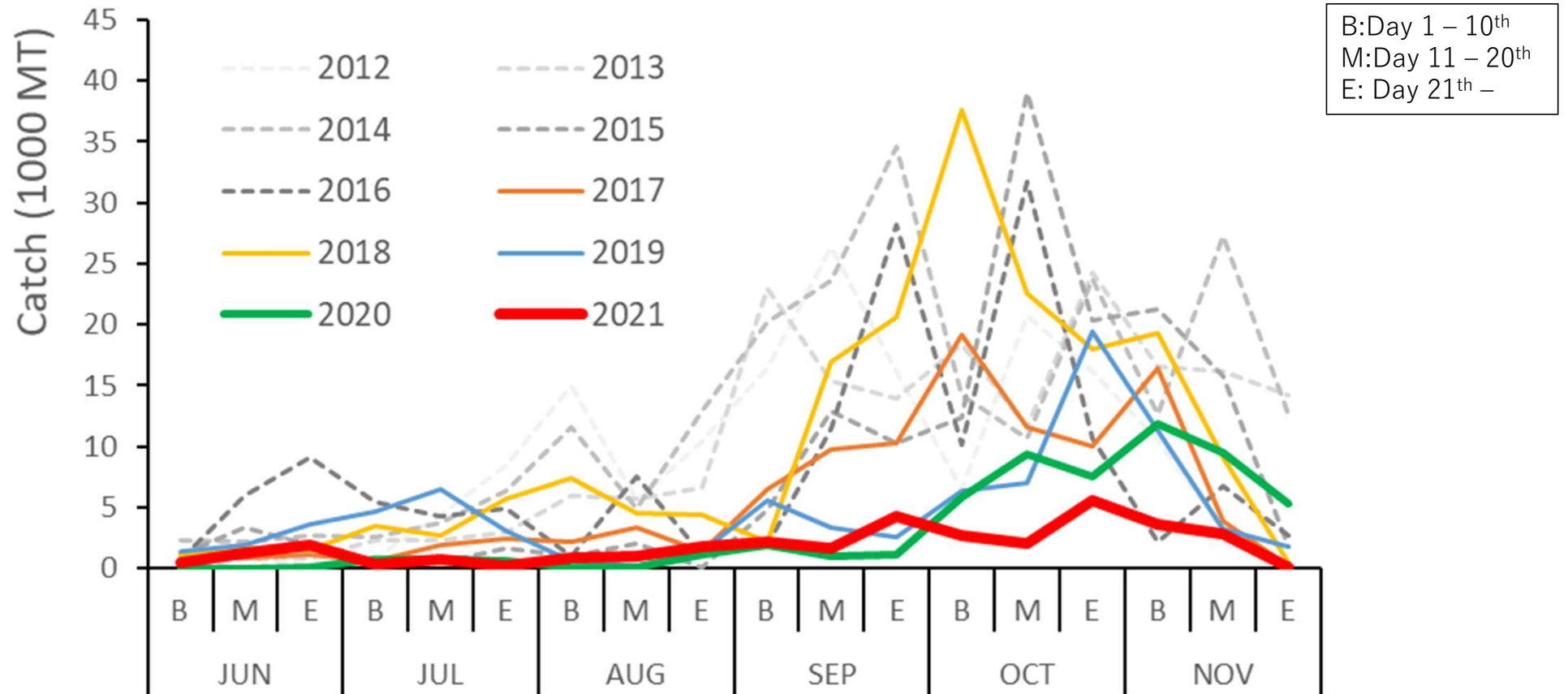
# Number of vessels

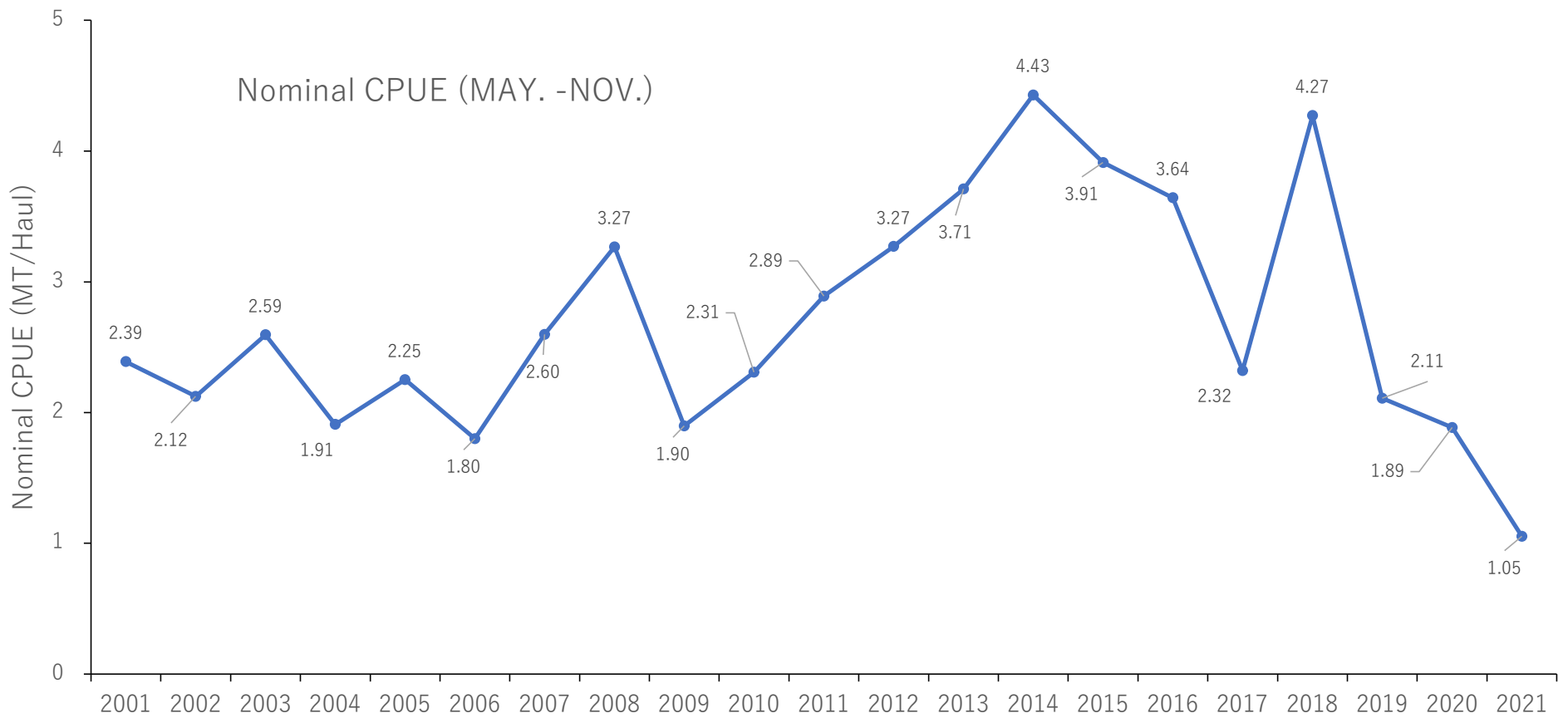


# Accumulated catch

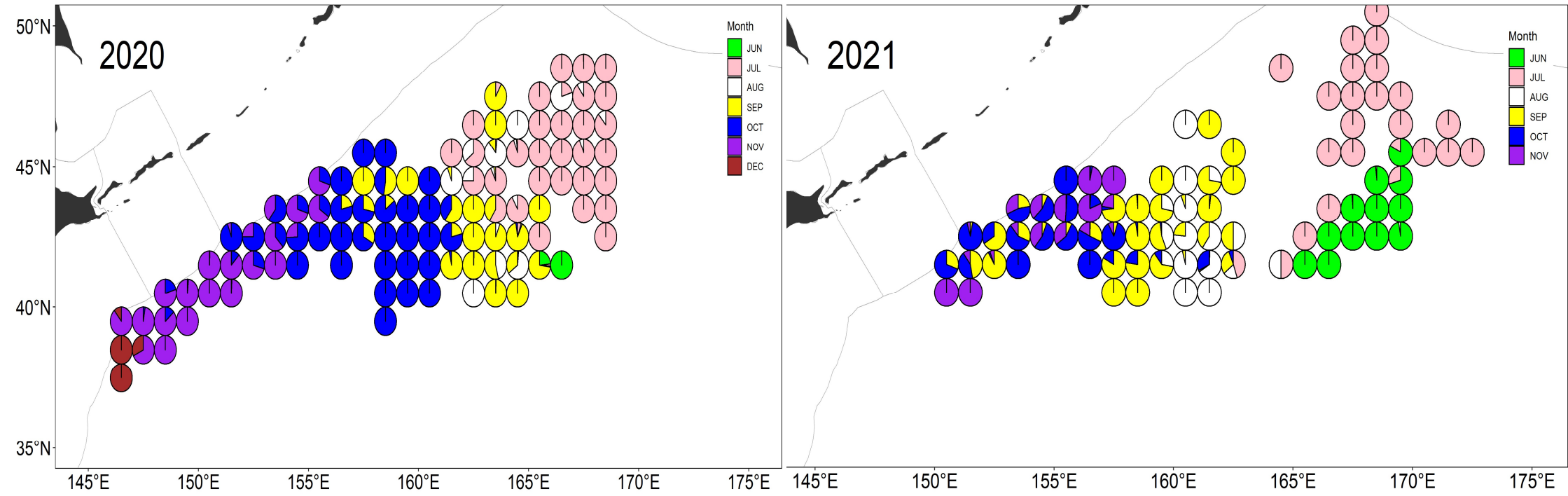


# Seasonal catch

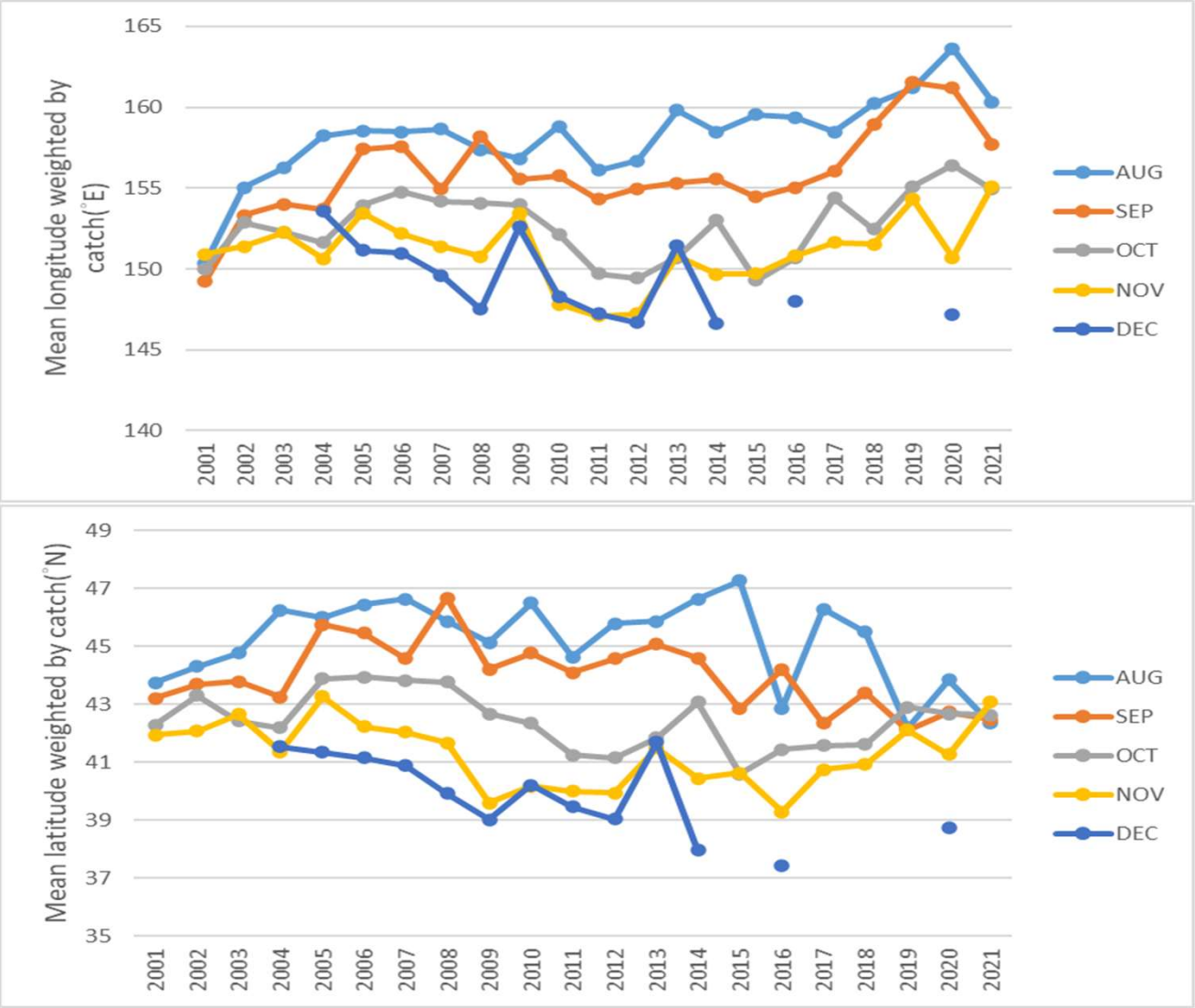




# Fishing ground



# Annual change of fishing ground





# Summary

- Accumulated catch by the end of November was 33,257 tons, which was less than that of the same period last year (56,452 tons).
- The nominal CPUE is about 1 tons /haul in 2021 (1.9 tons /haul in 2020, 2.1 tons /haul in 2019).