

NPFC IUU VESSEL LIST

Revised 22 January 2018

Commission Members adopted the attached NPFC IUU List at the Third Commission Meeting in July 2017, *with agreement for the addendum attached hereto dated 13 November 2017.*

No.	a. Name of vessel (previous names)	b. Flag of vessel (previous flags)	c. Owner (previous owners)	d. Operator of vessel (previous operators)	e. Call sign of vessel (previous call signs)	f. Lloyds/IMO number	h. Date first included on NPFC IUU List	i. Summary of activities
1	LIAO YUAN YU 071	unknown	Not known	Not known	Not known	Not known		It was seen at 42°15.4'N, 153°22.8'E on 23 Aug 2016. When the Japanese patrol vessel approached, a vessel crew tried to hide the vessel name. Communication between the Japanese patrol vessel and LIAO YUAN YU 071 indicated that they hid the vessel name because they didn't want to be caught. (Port displayed on the vessel: Shidao; Vessel type; Lighted lift net vessel; Tonnage: 800t)

g. Photographs



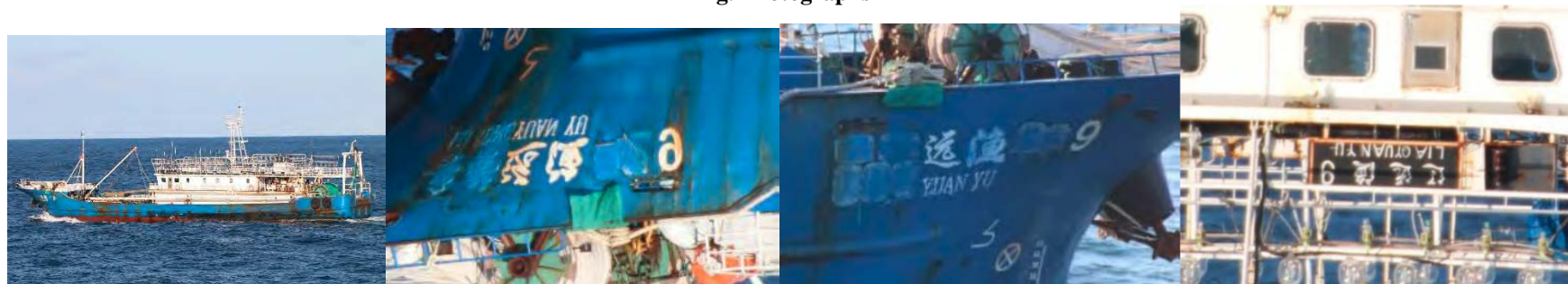
2	LIAO YUAN YU 072	unknown	Not known	Not known	Not known	Not known	It was seen at 42°18.7'N, 153°27.9'E on 23 Aug and at 42°9.2'N, 151°16.4'E on 11 Oct 2016. Vessel name was hidden by paint. (Port displayed on the vessel: Shidao; Vessel type; Lighted lift net vessel; Tonnage: 800t)
---	------------------	---------	-----------	-----------	-----------	-----------	---

g. Photographs



3	LIAO YUAN YU 9	unknown	Not known	Not known	Not known	Not known	It was seen at 42°3.0'N, 153°0.8'E on 23 Aug and at 42°10.0'N, 151°16.8'E on 11 Oct 2016. Vessel name was hidden by paint. (Port displayed on the vessel: Shidao; Vessel type; Lighted lift net vessel; Tonnage: 800t)
---	----------------	---------	-----------	-----------	-----------	-----------	--

g. Photographs



4	ZHOU YU 651	unknown	Not known	Not known	Not known	Not known	It was seen at 42°30'2N, 152°05'4E on 29 Sep 2016. (Port displayed on the vessel: Fungcheng; Vessel type; Lighted lift net vessel; Tonnage: 850t)
---	-------------	---------	-----------	-----------	-----------	-----------	---

g. Photographs



5	ZHOU YU 652	unknown	Not known	Not known	Not known	Not known	It was seen at 42°48.9'N, 152°48.2'E on 7 Sep 2016. Port of registry was hidden by paint. (Vessel type; Lighted lift net vessel; Tonnage: 820t)
---	-------------	---------	-----------	-----------	-----------	-----------	---

g. Photographs



6	ZHOU YU 653	unknown	Not known	Not known	Not known	Not known	<p>It was seen with LU RONG YU YUN 56219 and ZHOU YU 656 at 42°11.9'N, 151°14.6'E on 30 Sep 2016. (Port displayed on the vessel: Fungcheng; Vessel type; Lighted lift net vessel; Tonnage: 850t)</p> <p>Communication between Japanese patrol vessel and LU RONG YU YUN 56219 indicated ZHOU YU 653 were transshipping 1500t of mackerel together with ZHOU YU 656.</p>
---	-------------	---------	-----------	-----------	-----------	-----------	---

g. Photographs



7	ZHOU YU 656	unknown	Not known	Not known	Not known	Not known	<p>It was seen with LU RONG YU YUN 56219 and ZHOU YU 656 at 42°11.9'N, 151°14.6'E on 30 Sep 2016. (Port displayed on the vessel: Fungcheng; Vessel type; Lighted lift net vessel; Tonnage: 850t) Note that the same vessel name with the different port of registry (Zhoushan) (600t) has been seen in the similar area.</p> <p>Communication between Japanese patrol vessel and LU RONG YU YUN 56219 indicated ZHOU YU 656 were transshipping 1500t of mackerel together with ZHOU YU 653.</p>
g. Photographs (No Photographs Available)							

8	ZHOU YU 657	unknown	Not known	Not known	Not known	Not known	<p>It was seen at 42°35.5'N, 152°6.7'E on 12 Sep 2016. (Port displayed on the vessel: Zhoushan; Vessel type; Lighted lift net vessel; Tonnage: 600t)</p>
---	-------------	---------	-----------	-----------	-----------	-----------	--



9	ZHOU YU 658	unknown	Not known	Not known	Not known	Not known	It was seen at 40°12.3'N, 148°40.5'E on 29 May 2016 and at 42°46.7'N, 152°41.2'E on 7 Sep 2016. (Port displayed on the vessel: Zhoushan; Vessel type: Lighted lift net vessel; Tonnage: 600t)
---	-------------	---------	-----------	-----------	-----------	-----------	---

g. Photographs



10	ZHOU YU 659	unknown	Not known	Not known	Not known	Not known	It was seen in the NPFC area on 2, 4, 13, 17 Jun and 7 Sep 2016. On 4 Jun the vessel name on the right side was hidden by paint. (Port displayed on the vessel: Zhoushan; Vessel type: Lighted lift net vessel; Tonnage: 600t)
----	-------------	---------	-----------	-----------	-----------	-----------	--

g. Photographs



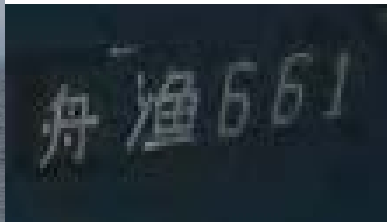
11	ZHOU YU 660	unknown	Not known	Not known	Not known	Not known	<p>It was seen in the Japanese EEZ on 10 May 2016 and in NPFC area multiple times from May to Sep 2016. On 10 May the vessel showed Korean flag but changed the Korean to Japanese flag when the Japanese patrol vessel approached.</p> <p>Vessel name changed between 15 May and 12 Sep 2016 (see the photos). The vessel is not permitted in Japan nor registered in NPFC. (Port displayed on the vessel: Basu-not apparent; Vessel type: Lightedlift net vessel; Tonnage: 600t)</p>
----	-------------	---------	-----------	-----------	-----------	-----------	--

g. Photographs



12	ZHOU YU 661	unknown	Not known	Not known	Not known	Not known	<p>It was seen in the Japanese EEZ on 10 and 13 May 2016 and in NPFC area on 15, 29 May and 7 Sep 2016. The vessel names on the left and right side changed frequently (see the photos). The vessel showed Japanese flag in May. But the vessel is not permitted in Japan nor registered in NPFC. (Port displayed on the vessel: Shidao; Vessel type: Lighted lift net vessel; Tonnage: 600t)</p>
----	-------------	---------	-----------	-----------	-----------	-----------	---

g. Photographs



13	HAI DA 705	unknown	Not known	Not known	Not known	Not known	Communications between Japanese Patrol vessel and HAI DA705 at 43°10.4'N, 153°38.6'E on 11 Sep 2016 indicated they caught squid with drift net in the high sea. (Port displayed on the vessel: 沈家们; Vessel type: Drift net vessel; Tonnage: 290t)
----	------------	---------	-----------	-----------	-----------	-----------	---

g. Photographs



Drift net

14	LU RONG YU 1189	unknown	Not known	Not known	Not known	Not known	Not known	It was seen at 41°24.9'N, 140°32.7'E (Japan EEZ) on 14 Jun 2016. (Port displayed on the vessel: Shidao; Vessel type: Carrier vessel; Tonnage: 100t)
----	-----------------	---------	-----------	-----------	-----------	-----------	-----------	---

g. Photographs



15	ZHE LING YU LENG 90055	unknown	Not known	Not known	Not known	Not known	Not known	It was seen at 40°25.3'N, 149°13.2'E on 29 May 2016. (Port displayed on the vessel: Wenling; Vessel type: Carrier vessel; Tonnage: 600t)
----	------------------------	---------	-----------	-----------	-----------	-----------	-----------	--

g. Photographs



16	ZHE LING YU LENG 905	unknown	Not known	Not known	Not known	Not known		It was seen at 42°45.6'N, 152°45.8'E on 24 Aug 2016. (Port displayed on the vessel: Wenling; Vessel type: Carrier vessel; Tonnage: 1000t)
g. Photographs (No Photographs Available)								

Addendum to initial NPFC IUU Vessel List adopted by Members

NPFC IUU VESSEL LIST								
								Addendum 22 January 2018
Commission Members agreed to the attached addendum to the NPFC IUU List effective the above date.								
No.	a. Name of vessel (previous names)	b. Flag of vessel (previous flags)	c. Owner (previous owners)	d. Operator of vessel (previous operators)	e. Call sign of vessel (previous call signs)	f. Lloyds/IMO number	h. Date first included on NPFC IUU List	i. Summary of activities
17	LU RONG YUAN YU 101	unknown	Not known	Not known	Not known	Not known		While LU RONG YUAN YU 101 is registered as a light PS vessel in the NPFC list, the identical name with different vessel types were seen. LU RONG YUAN YU 101 with lift net type was seen at 49°9.2'N, 149°19.5'E on 17 May 2016. LU RONG YUAN YU 101 with stern-trawl type was seen at 38°0.2'N, 145°58.5'E on 20 May 2016. (Port displayed on the vessel: Shidao; Vessel type: Stern Trawl/Light lift net vessel; Tonnage: 800t/651t)
g. Photographs								
<i>Any vessel with this name is now assumed to be IUU</i>								

18	LU RONG YUAN YU 102	unknown	Not known	Not known	Not known	Not known	<p>While LU RONG YUAN YU 102 is registered as one light PS vessel in the NPFC list, the identical name with different vessel types were seen. LU RONG YUAN YU 102 with lift net type was seen at 42°21.3'N, 151°55.5'E on 11 Oct 2016. LU RONG YUAN YU 102 with stern-trawl type was seen at 42°7.3'N, 151°13.8'E on the same day. LU RONG YUAN YU 102 was also seen with a carrier vessel "MIN FU DING YU LENG 08888" at 42°22.2'N, 151°19.6'E on 12 Oct 2016. (Port displayed on the vessel: Shidao; Vessel type: Stern Trawl/Light lift net vessel; Tonnage: 800t/651t)</p>
g. Photographs <i>Any vessel with this name is now assumed to be IUU</i>							
19	LU RONG YUAN YU 103	unknown	Not known	Not known	Not known	Not known	<p>While LU RONG YUAN YU 103 is registered as one light PS vessel in the NPFC list, the identical name with different vessel types were seen. LU RONG YUAN YU 103 with lift net type was seen at 40°25.9'N, 150°9.9'E on 1 June 2016. LU RONG YUAN YU 103 with stern-trawl type was seen at 37°59.9'N, 145°58.5'E on 20 May 2016. (Port displayed on the vessel: Shidao; Vessel type: Stern Trawl/Light lift net vessel; Tonnage: 651t/651t)</p>
g. Photographs <i>Any vessel with this name is now assumed to be IUU</i>							

20	LU RONG YUAN YU 105	unknown	Not known	Not known	Not known	Not known	While LU RONG YUAN YU 105 is registered as one light PS vessel in the NPFC list, the identical name with different vessel types were seen. LU RONG YUAN YU 105 with lift net type was seen at 42°27'N, 152° 5.8'E on 11 Oct 2016. LU RONG YUAN YU 105 with stern-trawl type was seen at 41°54.8'N, 151°17.4'E on 5 Sep 2016. (Port displayed on the vessel: Shidao; Vessel type: Stern Trawl/Light lift net vessel; Tonnage: 651t/651t)
g. Photographs <i>Any vessel with this name is now assumed to be IUU</i>							
21	LU RONG YUAN YU 106	Unknown	Not known	Not known	Not known	Not known	While LU RONG YUAN YU 106 is registered as one light PS vessel in the NPFC list, the identical name with different vessel types were seen. LU RONG YUAN YU 106 with lift net type was seen at 40°30.4'N, 149°34'E on 29 May 2016. LU RONG YUAN YU 106 with stern-trawl type was seen at 40°17.6'N, 148°33'E on the same day. The two fishing vessels with duplicate names "LU RONG YUAN YU 106" were seen transshipping with a carrier vessel "MIN FU DING YU LENG 08888" at 42°16.4'N, 151°21.4'E on 8 Oct 2016 (see the last photo). (Port displayed on the vessel: Shidao; Vessel type: Stern Trawl/Light lift net vessel; Tonnage: 651t/651t)
g. Photographs <i>Any vessel with this name is now assumed to be IUU</i>							

22	LU RONG YUAN YU 108	Unknown	Not known	Not known	Not known	Not known	While LU RONG YUAN YU 108 is registered as one light PS vessel in the NPFC list, the identical name with different vessel types were seen. LU RONG YUAN YU 108 with lift net type was seen at 40°28.4'N, 149°28.1'E on 29 May 2016. LU RONG YUAN YU 108 with stern-trawl type was seen at 40°18.6'N, 148°30.7'E on the same day. (Port displayed on the vessel: Shidao; Vessel type: Stern Trawl/Light lift net vessel; Tonnage: 651t/651t)
g. Photographs							
<i>Any vessel with this name is now assumed to be IUU</i>							
23	LU RONG YUAN YU 109	Unknown	Not known	Not known	Not known	Not known	While LU RONG YUAN YU 109 is registered as one light PS vessel in the NPFC list, the identical name with different vessel types were seen. LU RONG YUAN YU 109 with lift net type was seen at 40°25.1'N, 149°25'E on 29 May 2016. LU RONG YUAN YU 109 with stern-trawl type was seen at 40°16.4'N, 148°32.1'E on the same day. (Port displayed on the vessel: Shidao; Vessel type: Stern Trawl/Light lift net vessel; Tonnage: 651t/651t)
g. Photographs							
<i>Any vessel with this name is now assumed to be IUU</i>							