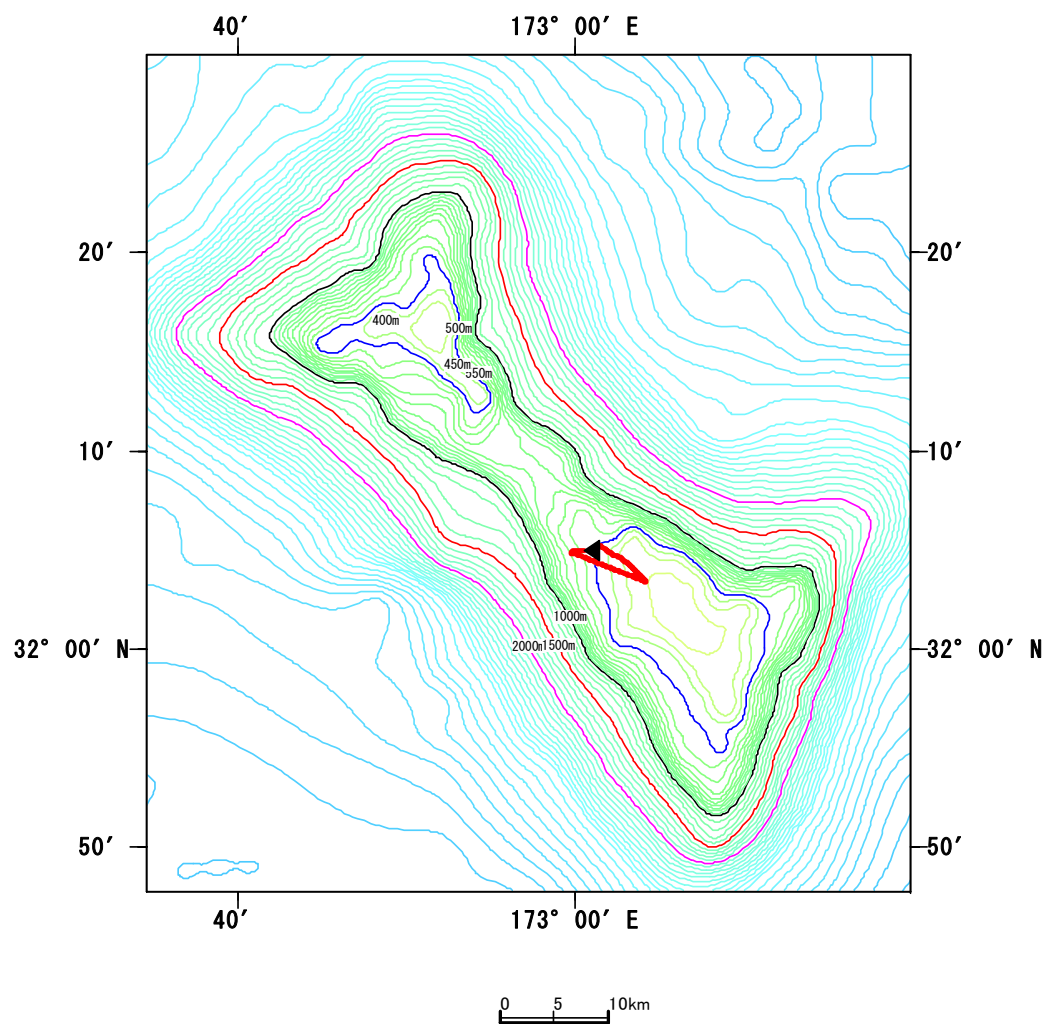


Kammu Seamount St6



Date: 2006/9/10

Position: 32-03.81N, 173-03.83E

Observed distance: 1.89044km



Ex. *Flabellum* sp.
Scleractinia sp.

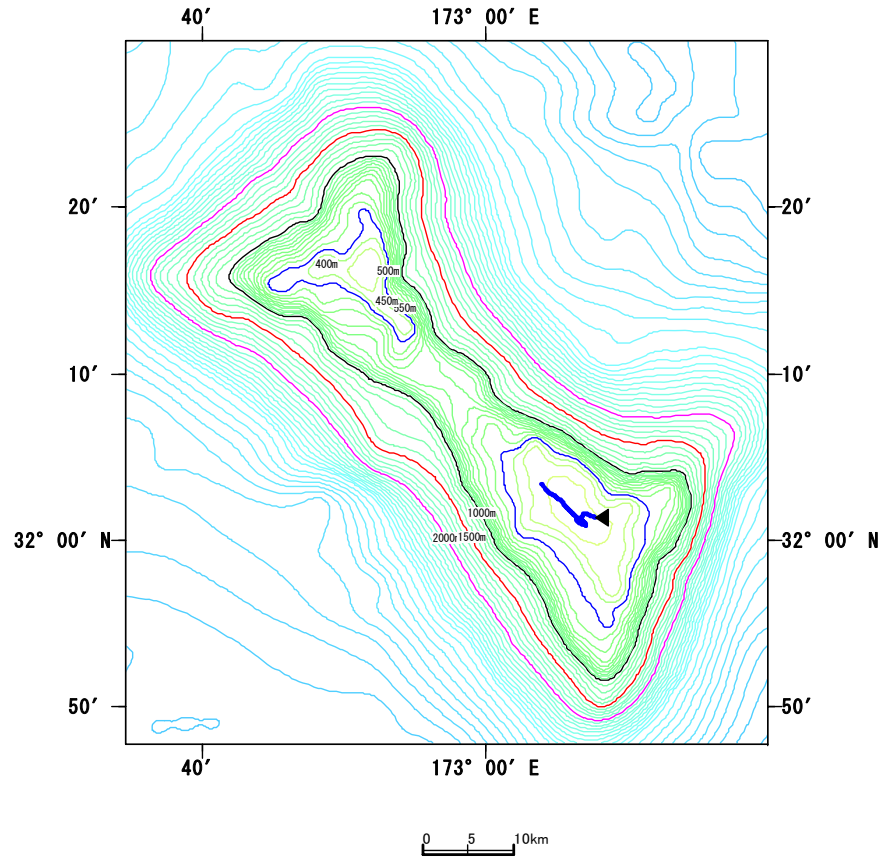


Ex. *Antipatharia* sp
Antipatharia spp.



Gorgonacea sp.

Kammu Seamount St5



Ex. Flabellum sp.

Scleractinia sp.



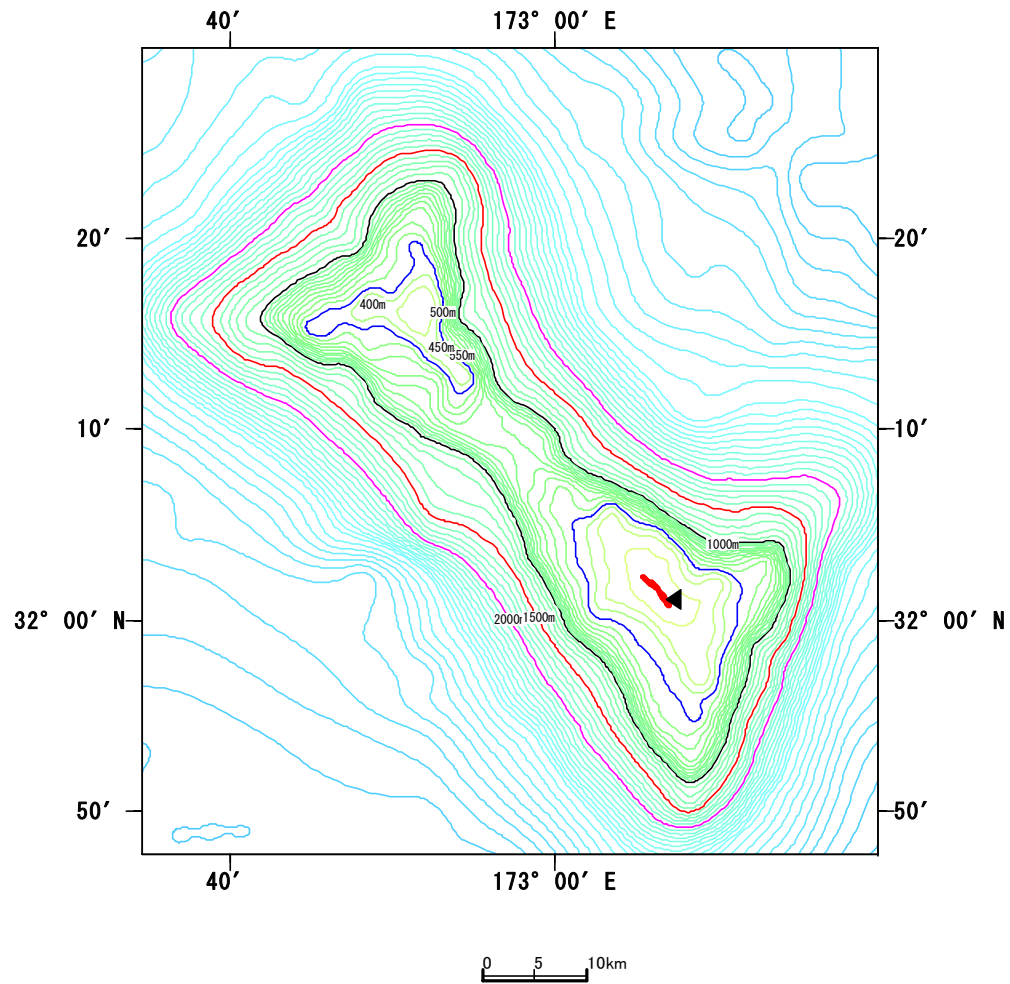
Ex. Antipatharia sp
Antipatharia spp.

Date: 2006/9/10

Position: 32-01.06N, 173-07.04E

Observed distance: 3.87226km

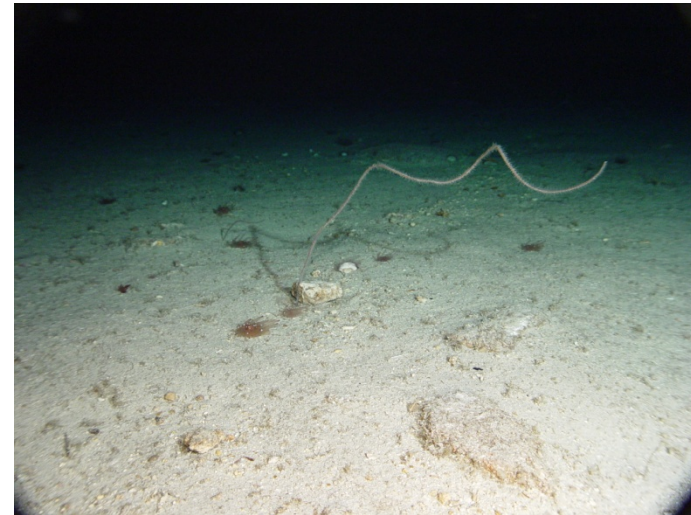
Kammu Seamount St4



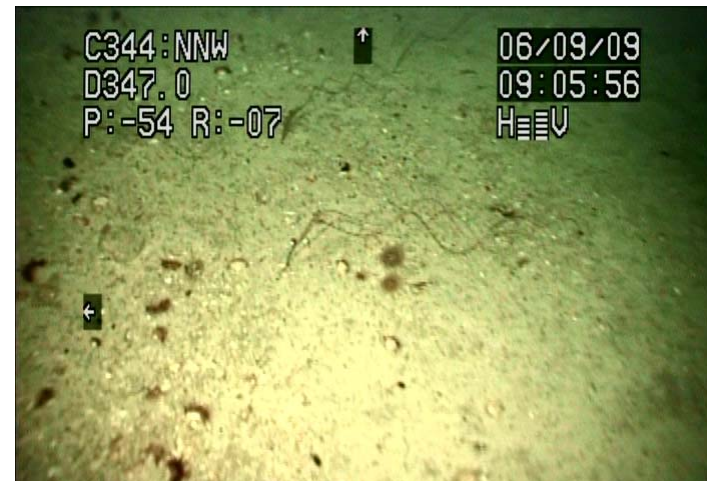
Date: 2006/9/9

Position: 32-00.95N, 173-06.97E

Observed distance: 1.92203km

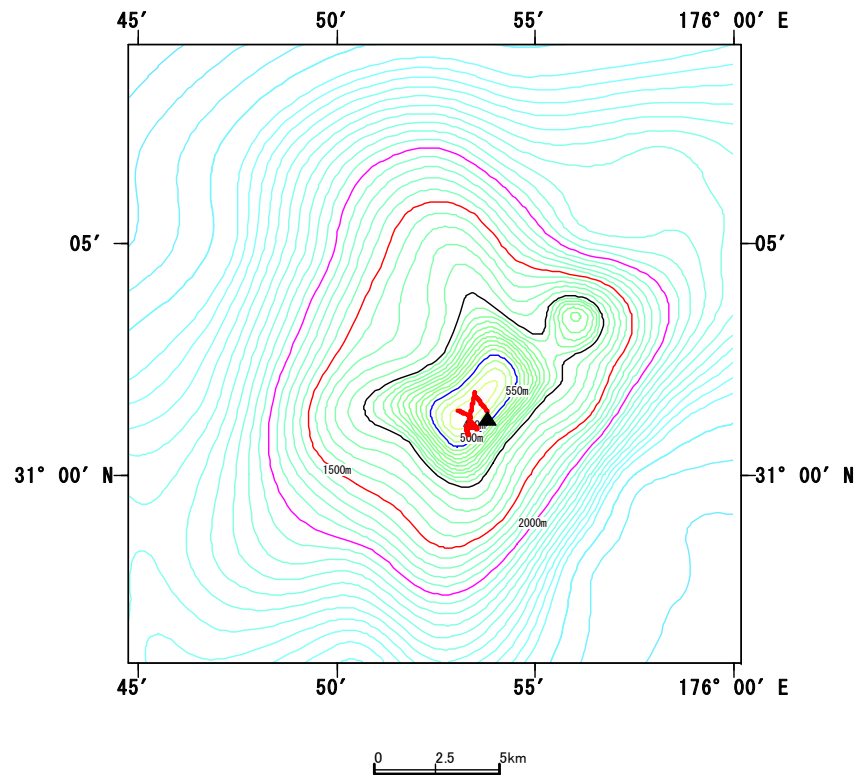


Ex. *Antipatharia* sp
Antipatharia spp.



Ex. *Flabellum* sp.
Scleractinia spp.

Colahan Seamount St3



Date: 2006/9/8

Position: 31-00.90N, 175-53.30E

Observed distance: 0.74875km

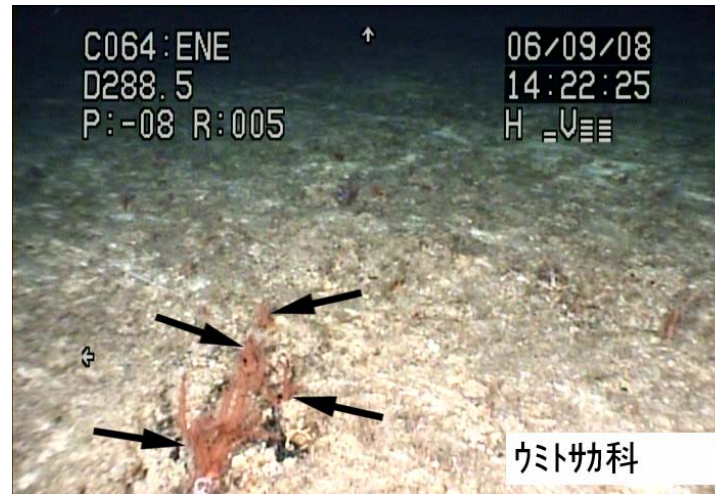
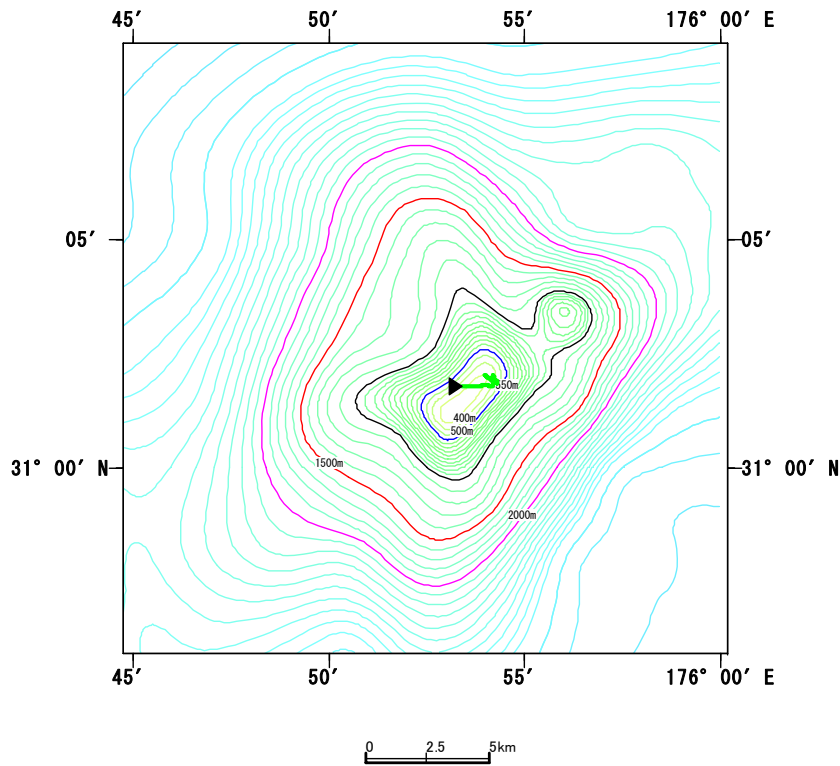


Ex. *Paraminabea* sp.
Alcyonacea spp.

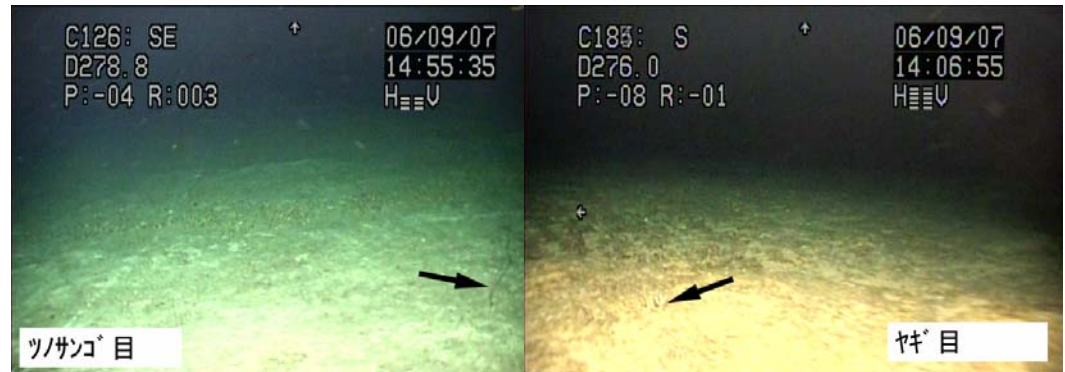


Gorgonacea sp.

Colahan Seamount St2



Ex. *Paraminabea* sp.
Alcyonacea spp.



Ex. *Bathypathes* sp.
Antipatharia spp.

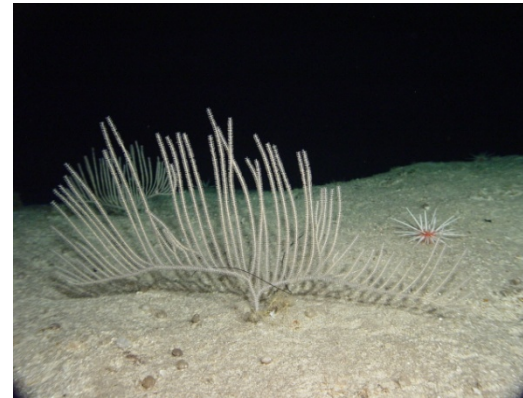
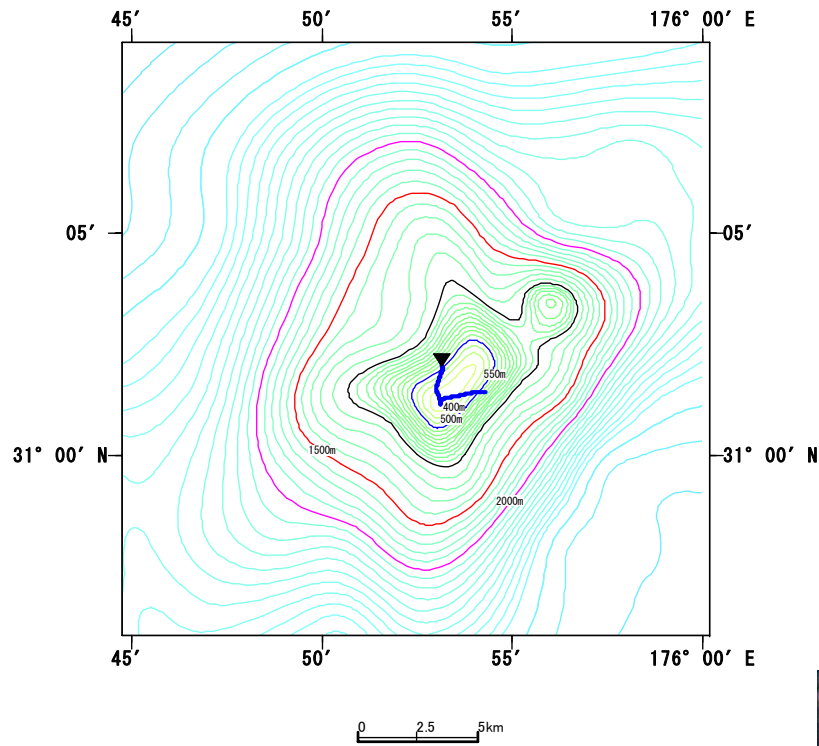
Gorgonacea sp.

Date: 2006/9/7

Position: 31-01.94N, 175-54.18E

Observed distance: 0.86830km

Colahan Seamount St1



Ex. *Calyptrophora* sp.
Gorgonacea spp.



Ex. *Bathypathes* sp.
Antipatharia spp.



Ex. *Paraminabea* sp.
Alcyonacea spp.

Date: 2006/9/6

Position: 31-01.35N,

Observed distance: 0.81609km

Summary

Table1. Four orders of corals observed by ROV in the North Pacific Seamounts group.

	Colahan			SE Kammu			NW Kammu	
	Summit	Summit	Summit	Summit	Summit	Summit	Slope	Summit
	1	2	3	4	5	6	7	8
Alcyonacea spp.	*	*	*	–	–	–	–	–
Gorgonacea spp	*	*	*	–	–	*	*	*
Scleractinia spp.	–	–	–	*	*	*	*	*
Antipatharia spp.	*	*	–	*	*	*	*	–

	Yuryaku		South Koko		Central Koko		North Koko	
	Slope	Summit	Slope	Summit	Slope	Summit	Slope	Summit
	9	10	11	12	13	14	15	16
Alcyonacea spp.	*	–	–	*	*	*	–	–
Gorgonacea spp	*	*	*	*	*	–	*	*
Scleractinia spp.	*	–	*	–	*	*	–	*
Antipatharia spp.	*	*	*	*	*	*	–	*

*: Existence of VMEs (Four order)

–: Absence of VMEs (Four order)